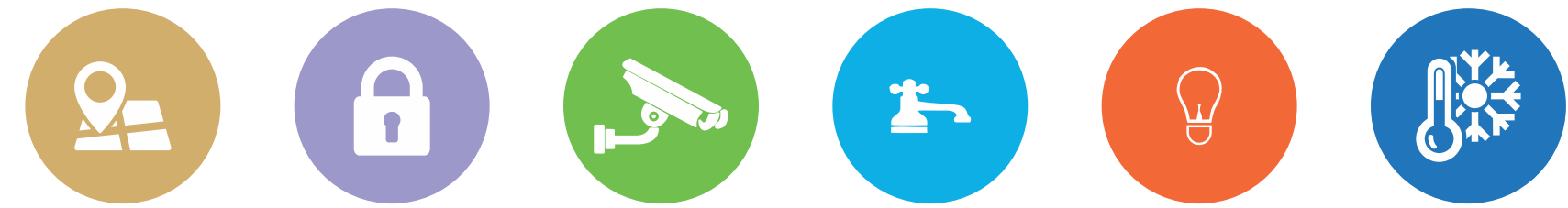




Redefining **Smart Living** with flexible E- Homes



the **PRESIDIO**

experience green living by sarvome



THANK YOU

Marketed by:



Madhyam.com

E-mail: info@madhyam.com

Cyprus (Europe) | Noida | Gurgaon | Faridabad | Bhiwadi | Vrindavan | Chandigarh

Follow us on:   /teammadhyam



Convenience

One of the important perspective SARVOME holds is towards the best facilitation possible for its patrons. This is the Primary focus in all activities and decisions of the company. To make lives easier every day is what we strive for at Sarvome.

Trust

SARVOME has developed valuable trust within the realty industry. To standby its customers in thick and thin is what SARVOME promises & values.

Luxury

One step ahead of facilitation, lands you at luxury. This is almost a way of life. Besides developing an ease in lifestyle, at SARVOME we infuses work with the perfect hint of luxury, making an extravagant package for lovers of life.

Honour

Working dedicatedly towards the ethos of its industry and keeping its promises at all costs; SARVOME has eventually earned a market value, respect over time. This value of honour has become the key driver of inspiration each time we at SARVOME face a new challenge.



everything you've ever dreamt of!

Having been in the business for 46 long years, Sarvome, with the corporate office in Faridabad and a land bank that spans across the country, has been engaged in real estate activities with a sense of responsibility and commitment.

Since we understand that a home means a lot to you, we have put in all our efforts and resources to create the best homes that are not just modern and comfortable but are also state-of-the-art structures you'll be proud of. So far we have already delivered in excess of 5000 homes to some very happy and satisfied customers.

At Sarvome, we are dedicated to blend luxury and comfort and technological excellence. We use the most advanced material and architectural sciences to create age-proof, safe and yet aesthetically beautiful homes that withstand the vagaries of nature with elan and aplomb.

The homes we create will not just mean the world to you, but will also be amongst the best in the world.

sarvome 
delivering value



homes that are straight out of your dreams

the PRESIDIO
experience green living by sarvome

The word Presidio means a fortress which connotes the idea here of a settlement that supports your dream house and is a green refuge from the hustle-bustle of city life with assurance of safety along with world class facilities. Designed around a green concept and crafted with the most advanced technologies and materials, The Presidio, another word for secure, is not just a building, it is a new paradigm that will rise in the Faridabad sky and be your Citadel for the rest of your life.

The amenities and features will redefine the way you live your life, and its location in the heart of human habitat will keep you connected with the world. The incredibly flexible E-Homes define a way of intelligent living. You can change the size of the living room/ bedroom as per the need along with all your favourite technology which is integrated in one system and everything work with a touch of button. The Presidio, in Sector 31, Faridabad, will be your island of peace, serenity and solace with everything you need just 2 minutes drive away. Its your world away from the world...yet so close to it!

The Presidio is the new way to live!

Flexible
E-Homes



Door Step
Amenities

Well
Connected



Middle of
Inhabited
Sector

great
living inside.
great connectivity
outside.

Feel the gush
of **fresh air**
all day round.

Walls that
don't give away
your **secrets!**

Green homes
with
Solar Energy

Intelligent
home
solution

Bring home
the **sunshine.**

Exteriors by us.
Interiors by you.



Fully ventilated apartment with
86% of organized open space



No Common walls, 2 flats to a core
with private lift for select sizes



Solar Panel on
Roof Top




We brings the control of multiple
elements in a single button press



Sunlight all day long



Design the way you want



TAKE A WALK TO
THE METRO

- Metro Station**
- Mewla Maharajpur Metro Station- 5 mins
 - NHPC Chowk & Sec 28 Metro Station-7 mins




HEALTH CARE BY
YOUR SIDE

- Hospital's**
- Prime Hospital & Ortho Centre, Sec 30 Faridabad – 2 mins
 - Sparsh Hospital & Ortho Centre, Sec 30, Faridabad – 2 mins
 - Asian Institute of Medical Sciences & Research Centre- 5 mins
 - Indraprastha Apollo Hospital- 10 minutes distance

School/Pre School


- Faridabad Model School, Sec 31, Faridabad – 2 mins
- KIDZEE Play School, Sec 31, Faridabad- 2 mins
- Delhi Public School, Mathura Road- 5 mins
- Manav Rachna International University- 10 mins



EDUCATION HAS
COME CLOSER

Multiplex/Cinema Halls


- SRS Cinema/ Multiplex – 2 mins
- PVR Crown Plaza, Sec 15A- 5 mins
- INOX, Crown Interiorz Mall, Mathura Road-5 mins




ENTERTAINMENT
AT YOUR DOORSTEP

BY-Pass & National Highway

- National Highway (NH2) is just 2 mins away
- Faridabad By Pass is at distance of 2 mins away




QUICK ACCESS




SHOP AT DROP
OF A HAT

- Malls/Shopping Center**
- Pristine Mall, Sec 31, Faridabad- 2 mins
 - Crown Interiorz Mall, Mathura Road- 4 mins
 - Vishal Mega Mart- 2 mins
 - Easy Day-2 mins




STEP OUT TO EAT

- Hotels/Restaurants**
- K Hotels-2 mins
 - 999 Restaurant- 2 mins
 - Domino- 2 mins
 - Anupam Sweets & Restaurant- 2 mins
 - Gian's Ice Cream – 2 mins
 - Local Convenience Shopping Centre- 2 mins



ANY TIME MONEY

- Banks & ATM**
- Canara Bank
 - HDFC Bank
 - Bank Of India
 - Punjab National Bank
 - Corporation Bank
 - Bank of Travancore



EASY REACH

- Other Important Destinations**
- Indra Gandhi International Airport – 45 mins
 - Connaught Place, Delhi -45 mins
 - Nizamuddin Railway Station -20 mins
 - Dhaura Kuan, New Delhi -40 mins
 - ISBT, Kashmiri Gate Bus Depot, Delhi – 50 mins

minutes
away from the
world!

live like the world does!

- Splendid Club covering about 15000 sq.ft.
- Party Hall with Guest Room
- 15 seated Movie Theater
- Business Center
- Cafe
- Library
- Swimming Pool
- Squash Court
- Badminton Court
- Basketball Court
- Lawn Tennis Court
- Indoor and Out Door Gymnasium
- Spa with Sauna Steam and Jacuzzi
- Dedicated rooms for boards & TV games
- Kids play room
- Table Tennis
- Pool Table
- Yoga & Meditation Area
- Amphitheater
- Toddler Zone
- Swings & Slides
- Jogging Track
- High Speed Elevators
- Two flats to a core
- 4 tier Security
- Gated community living
- 100% Covered Parking area



spa



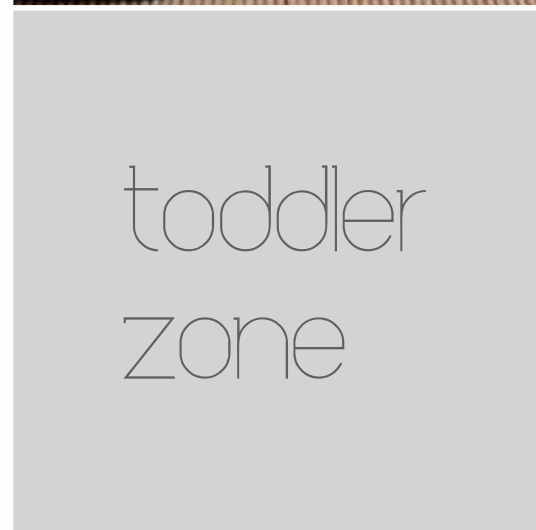
squash



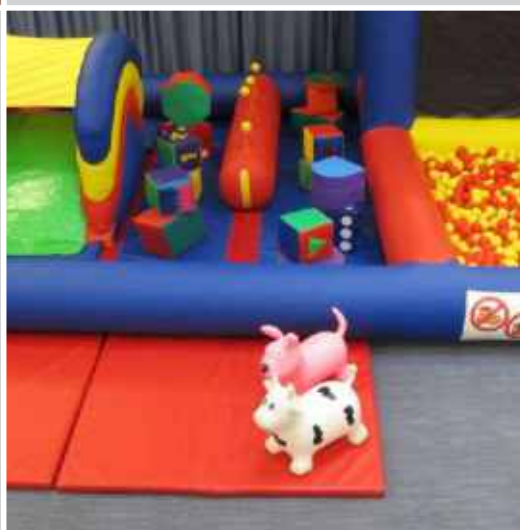
gym



tennis court



toddler zone



yoga center



elderly zone

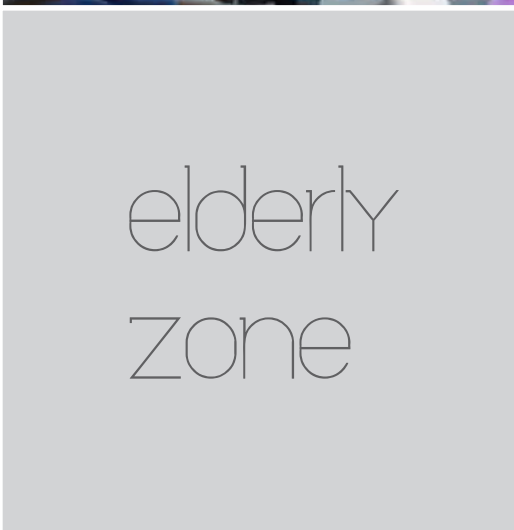
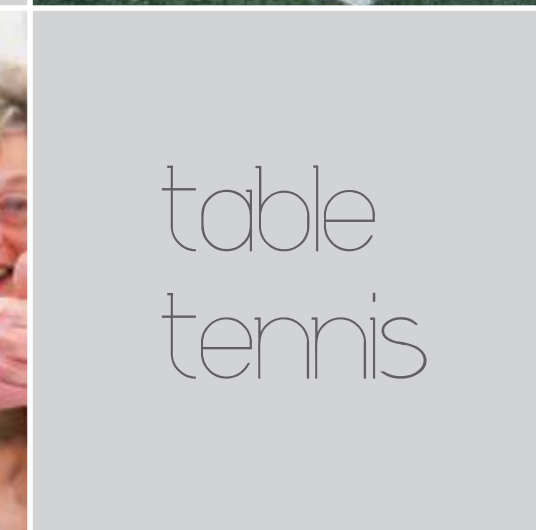


table tennis



jogging track



100% covered parking



mini theater



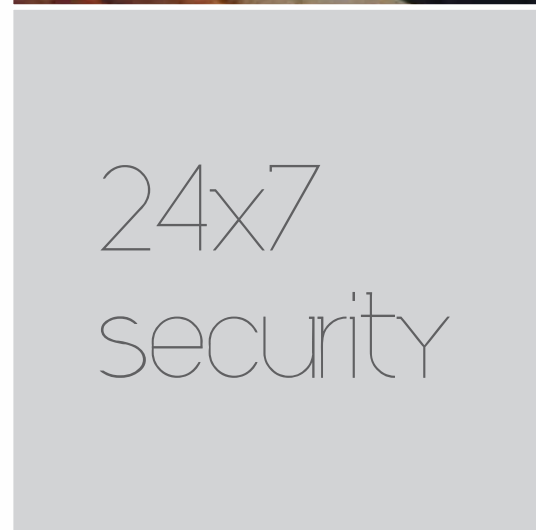
lush green



electric fencing



smart home



24x7 security



cctv



enter into a world class lifestyle

The entrance of this integrated housing sets the tone for what is ahead. Complete with modern infrastructure and world class security, as soon as the grand gates open, they are sure to leave a lasting impression on you. The natural lushness and contemporary styling come together to offer a unique experience. The beautiful fountains and well manicured grass are a perfect example of exquisite styling and immaculate detailing.



want a
bigger room?
tell us, and we'll
push the wall back!

We believe that your dream home should really be the home that you've always wanted.

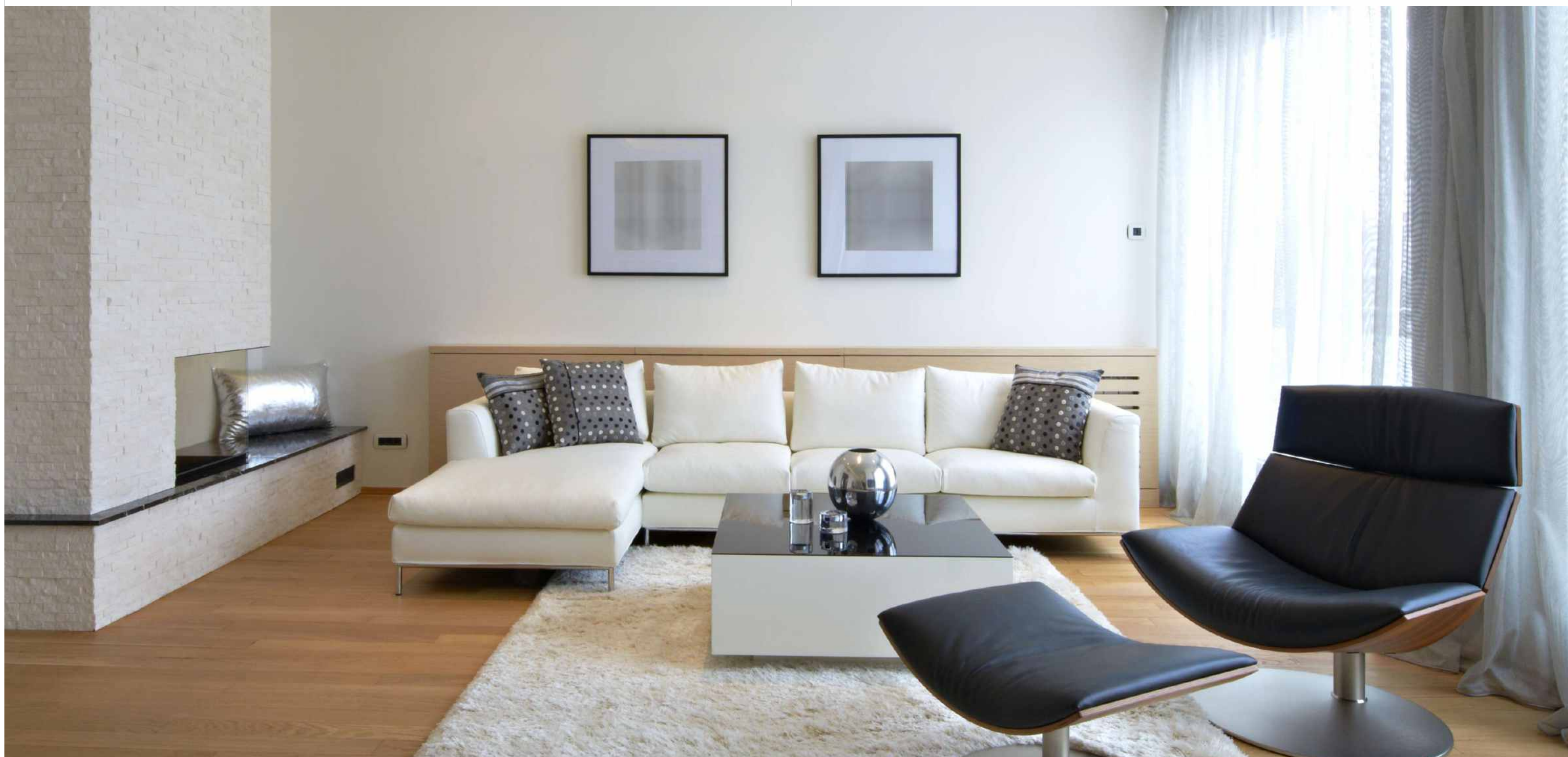
The Presidio brings the unique concept of customizable homes to you, where we design the exterior of your home and you decide the interior.

Now this is what we call freedom of expression.



setting an elegant tone

You seldom get a second opportunity to make a first impression. The inviting entrance lobby sets the tone to the grandeur that awaits you in your new home. Subtly elegant, it speaks volumes about the resident while providing a warm embrace to everyone, every day.





Start Smart Living with E-Homes

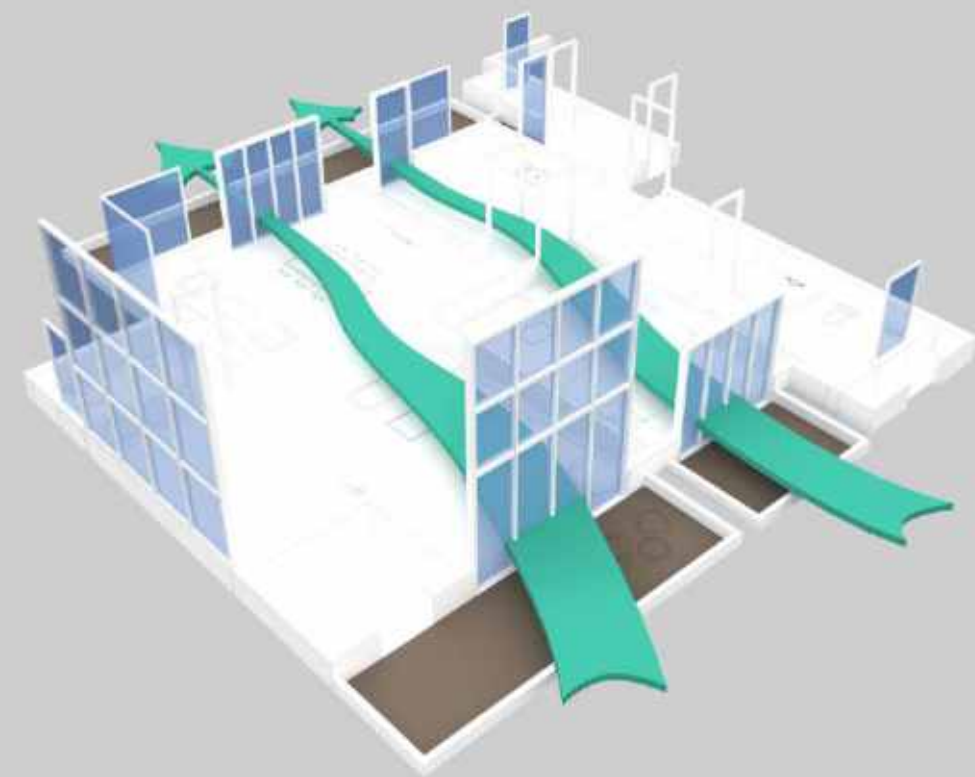
Manage your home in just one click via remote, touchscreen, smartphone through internet. Our state-of-the-art smart home technology is designed to give you a modular lifestyle by allowing you a seamless control over your house from anywhere at any time. You can enjoy personalized automation for all aspects of your property, including lighting, climate, appliances, curtains, multi-room video, digital surveillance, and energy saving. The experience of a digital lifestyle is now just at your home on your fingertips. Easy way - Better Life!



Your kitchen will be a feast to the eyes

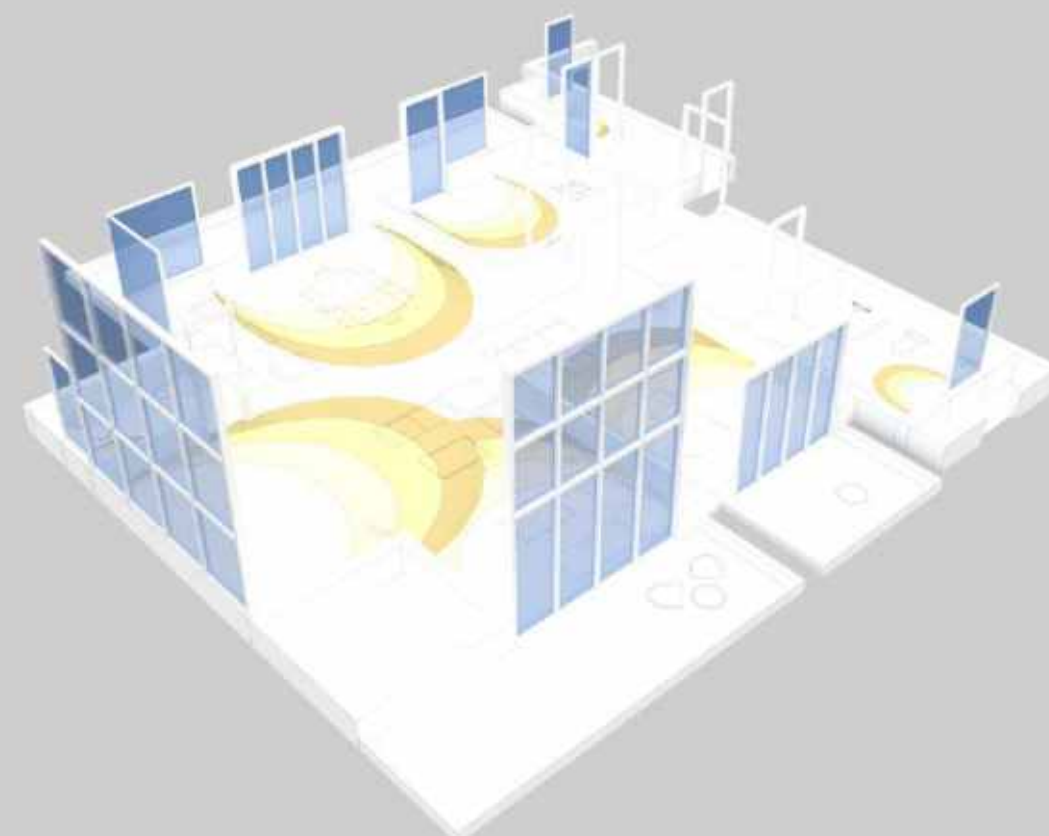
Kitchen takes pride of place in these magnificent homes and rightly so. Ergonomic design, modular construction and the latest appliances make cooking sheer pleasure in your new home. Ample spaces for storage and thoughtfully demarcated areas for specific tasks help in organising your kitchen better.

green to the core



Each structure has been placed in angles that welcome the Sun & Diffused light from all the sides

A balance between walls and windows with their calculated placement to ensure maximum light and wind and minimum heat passed on to the interiors of the home.



Each structure has been placed in angles that allow Air to pass from all the sides.

Air changes are the amount of time air needs to pass through a home space in an hour. SkyBunglows provides the maximum amount of air changes, which means the highest amount of ventilation vis-a-vis most home structures that one may be aware of.

Specifications

Lift Lobby	Imported marble and granite combination flooring.
	Imported marble, granite and paint finish on walls.
	Gypsum and Grid tile false ceilings.
	LED light fittings.
	Modular Electric Switches.

Luxury

Bedrooms	Laminated wooden / vitrified tile of size 800 mm x 800 mm flooring.
Air Conditioning	All Rooms fitted with split A/C including Living & Dining
Living and Dining	Imported Marble Flooring
Wall and Ceiling	Pleasing shades of acrylic emulsion paint on POP surfaces.
Toilets	Master: Imported marble flooring & cladding upto 2.4 meters.
	Other: 800 mm x 400 mm vitrified tiles on floor.
	Other: 800 mm x 400 mm vitrified tiles on the wall till 2.4 meters.
	C.P. Fitting : Kohler / Jaquar or Equivalent. Chinaware: Duravit / Kohler or Equivalent. Glass cubical in all bathrooms.
Kitchen	Vitrified 800 mm x 800 mm tile flooring.
	Modular kitchen, under and over counters in laminated finish.
	Granite counter top with sink Kohler / Jaquar C.P. Fittings.
Electrical	Home Automation System and modular switches from Legrand / Schneider / ABB / Norisys or Equivalent.
Woodwork	Teak finish flush doors.
	Teakwood doorframes. Cupboards with laminated shutters.
Windows	UPVC Windows.
Balcony	Ceramic Tiles of size 300 mm x 300 mm.
	Toughened glass railings with steel. Exterior Quality paint.

Standard

Bedrooms	Laminated wooden/Vitrified tile of size 600 mm x 600 mm flooring.
Living and Dining	Vitrified Flooring of Size 800 mm x 800 mm.
Wall and Ceiling	Pleasing shades of acrylic emulsion paint on POP surfaces.
Toilets	Master: Vitrified tile flooring & cladding upto 2.4 meters.
	Other: 300 mm x 300 mm Ceramic tiles on floor.
	Other: 300 mm x 300 mm ceramic tiles on the wall till 2.4 meters.
	C.P. Fitting : Jal / Parco or Equivalent Chinaware: Parryware / Cera or Equivalent.
Kitchen	Vitrified 600 mm x 600 mm tile flooring.
	Granite counter top with sink Jal / Parco or Equivalent
	Home Automation System and modular switches from Legrand / Schneider / ABB / Norisys or Equivalent.
Electrical	Home Automation System and modular switches from Legrand / Schneider / ABB / Norisys or Equivalent.
Woodwork	Skin Moulded doors.
	Hardwood doorframes.
Windows	UPVC Windows.
Balcony	Ceramic Tiles of size 300 mm x 300 mm.
	Toughened glass railings with steel. Exterior Quality paint.

location map



Site Map

