



The Palm
...true luxury Villa's

THIVIM, NORTH GOA

Goa is not just a place,

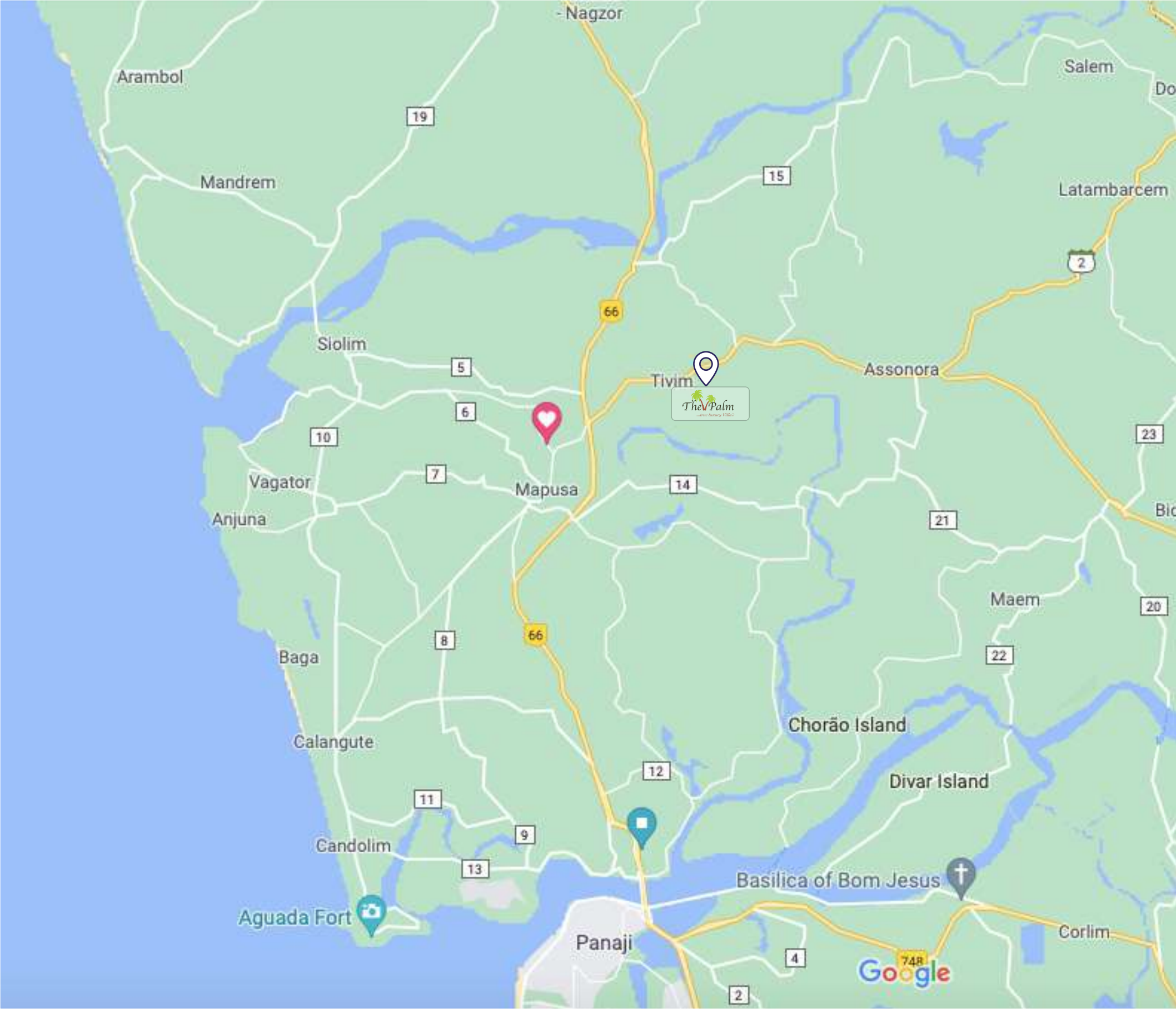
it's a way of living luxury green life.





Dhanva THIVIM

Tivim pronounced Thivim, is a village in Nathivim in Bardez, in the North Goa district of Goa, India. It is an important gateway into North Goa as the home to the major railway station in North Goa. Tivim was also the ancestral village of the first global beauty queen of India, Ms. Reita Faria.



Location

The palm is strategically located off Mapusa-Dodamarg highway, little bit away from noise of traffic and well connected with all tourism destinations of North Goa.

NEAREST BEACHES

BAGA : 12KMS

CALANGUTE : 14KMS

ANJUNA : 11 KMS

MORJIM:- 12KMS

HOTSPOTS

New International Airport Mopa: 20 Mins Drive

Mapusa Market: 10 Mins drive

Tivim Rly. Station: 5 Mins drive

Panaji: 20 Mins drive





Launching the 1st edition of **Natural Living.**



Welcome to GHD the palm a castle in air with a plan to drive through nature for peace, health & prosperity. spread over 5500 Sq.Mtrs land, one of a kind concept Villa's in tivim, North Goa.

Conceived & designed with the purpose of creating a world-class living habitat, that is a celebration of life. GHD Infra Stratagems to come up with sequence of such lifestyle homes in Goa that foster life towards organic existence. We believe to transform the much preferred 'smart life' to simple natural green life that deliver tranquility in & out.



THE PALM



The Palm is a HI-END SEMI-Furnished gated community Villa's thoughtfully designed to attain the perfect balance between modernity and natural living. Each floor offers an intimate living space and magnificent views that makes living at the palm even more enrich.

The Palm offers expansive floor living wrapped up impeccably, with the elements of nature.

Celebrate the joy of scopious views of the greens;

Celebrate the joy of elegant life.

Come Celebrate Life at The Palm by GHD



MASTER PLAN



DAY VIEW



2/3 BHK VILLA'S

This is an artists rendition and may undergo modifications.



INTERIOR VIEW

This is an artists rendition and may undergo modifications.

DAY VIEW



4 BHK VILLA'S

This is an artists rendition and may undergo modifications.



REAR POOL VIEW

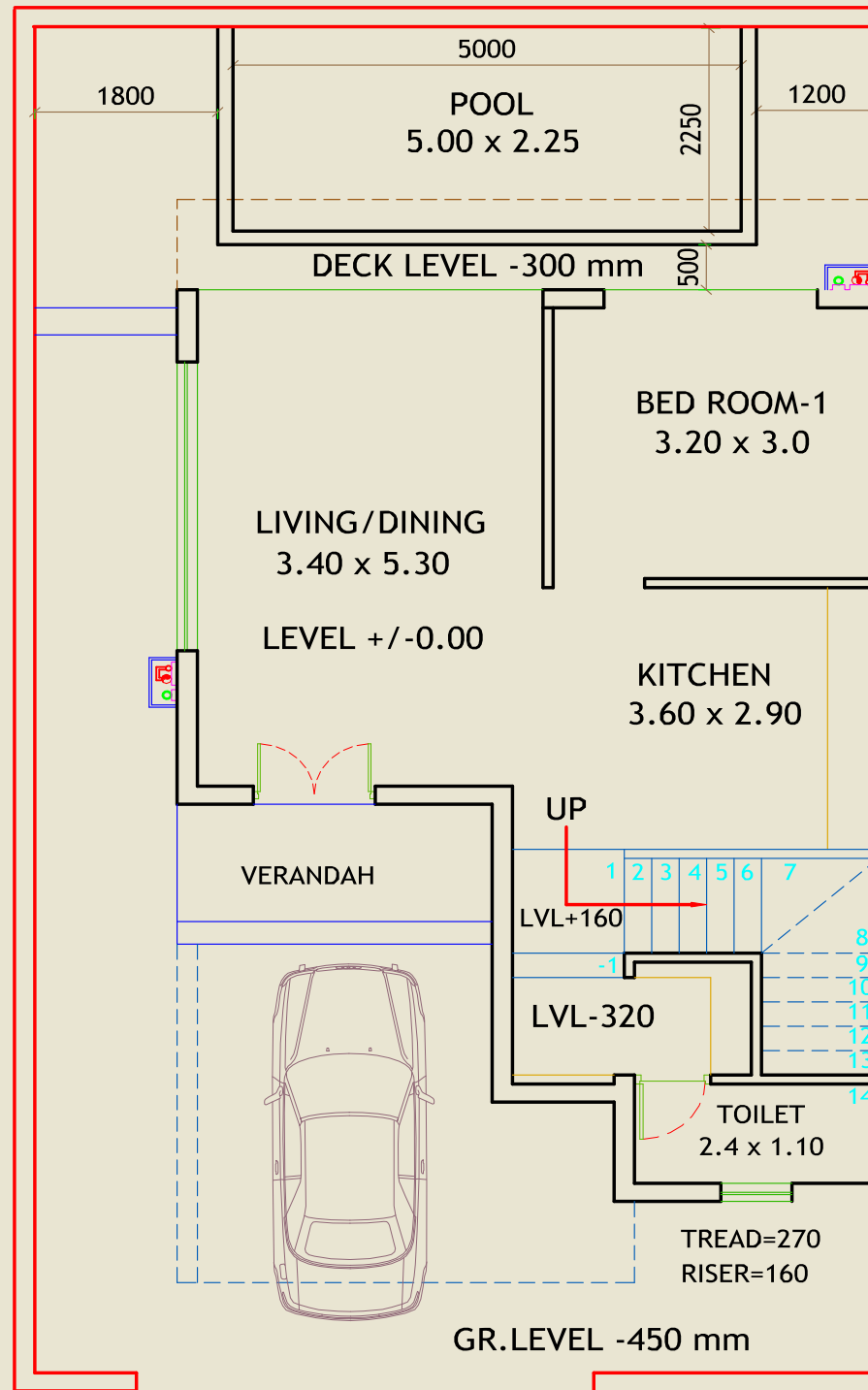


INTERIOR VIEW

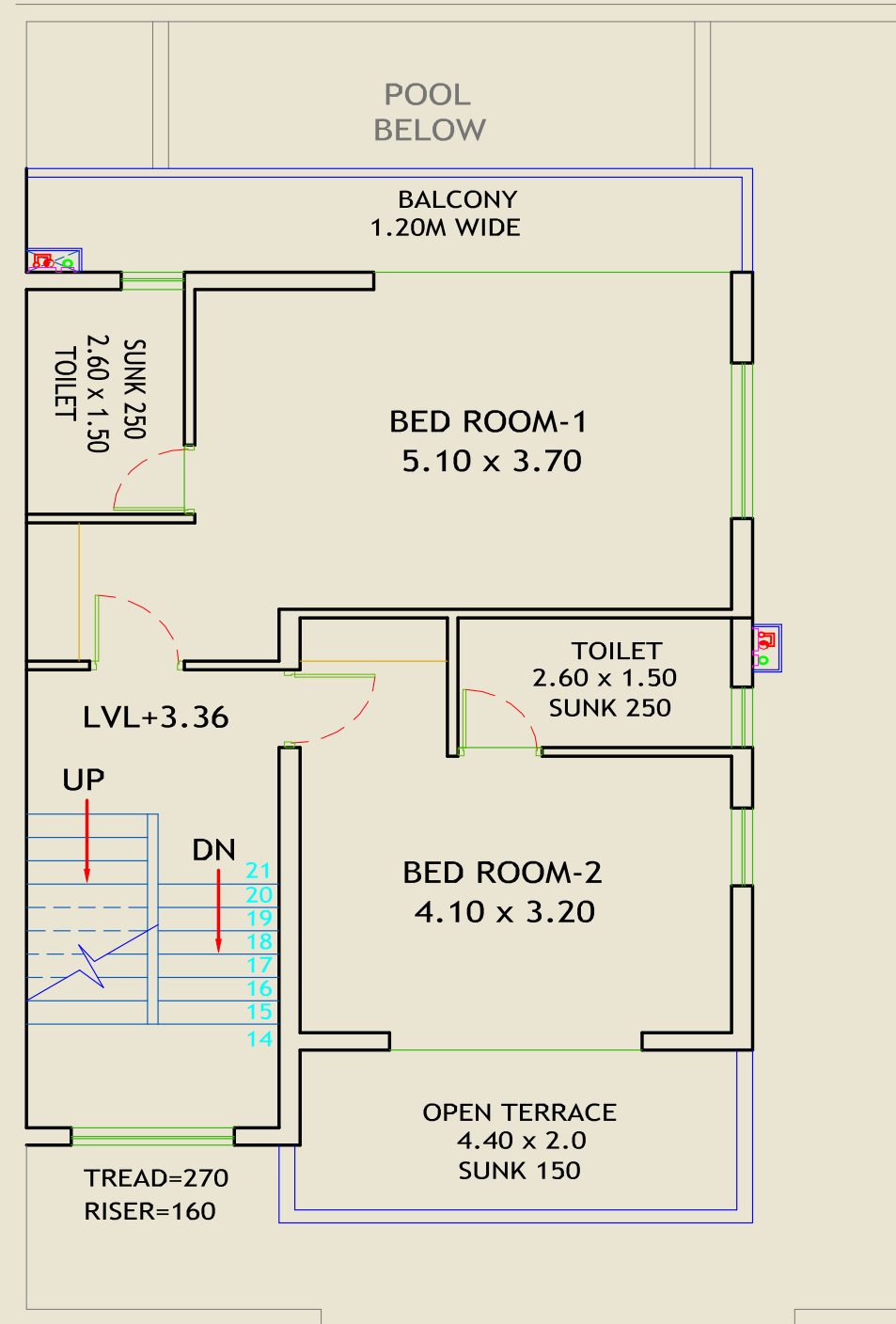
FLOOR PLAN

3 BHK VILLA

141.60 Sq.Mtrs / 1524 Sq.Ft



GROUND FLOOR PLAN



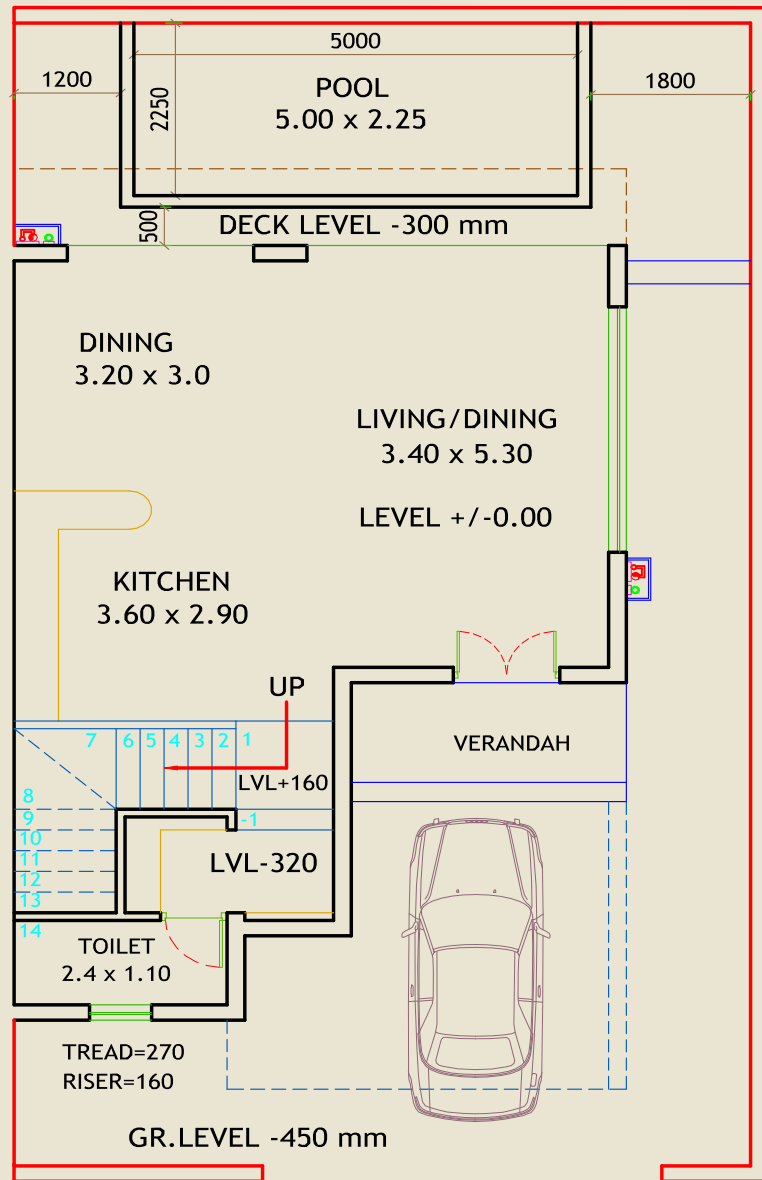
FIRST FLOOR PLAN

*Subject to change as per the final measurement at the time of final offer of possession.

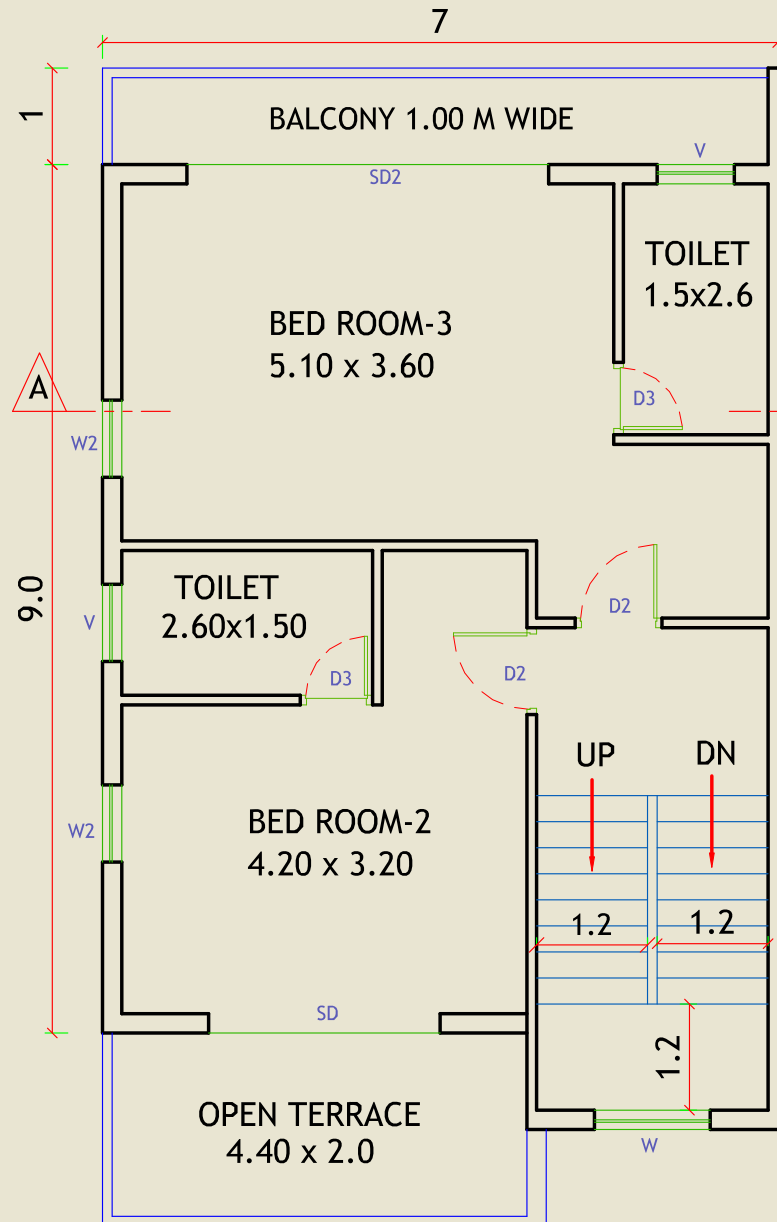
FLOOR PLAN

4 BHK VILLA

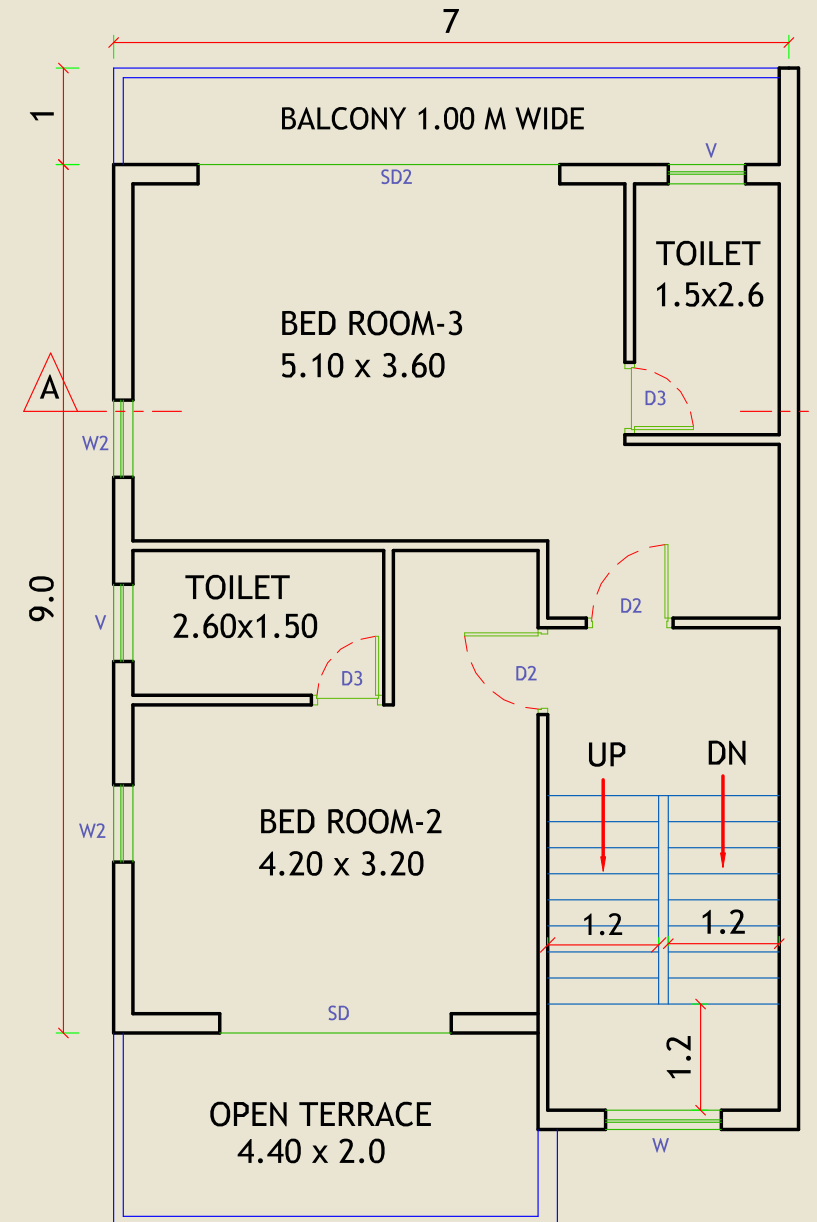
218.60 Sq.Mtrs / 2353 Sq.Ft



GROUD FLOOR PLAN



FIRST FLOOR PLAN



SECOND FLOOR PLAN



Street Veiw

CLUBHOUSE



Swimming pool | Kids splash pool | Changing rooms |

Unisex gymnasium

Multipurpose hall | TV lounge |

Indoor games room with pool / billiards table

AMENITIES





AMENITIES



AMENITIES



SPECIFICATIONS



Bedroom

- Lighting Fixtures & fan
- Gypsum plaster
- UPVC windows
- Terrazo tiles or equivalent



Bathroom

- Lighting & Fixtures
- UPVC windows
- Duco / Italian PU coated doors
- Antiskid / Terrazo floor tiles
- 8 ft. marble / tile height on walls
- Fitting of Jaguar / Kohler or equivalent



Structure

- Water proof terrace / sundeck
- Raised plinth level
- RCC framed structure
- External walls of Laterite Stones
- ISI Grade iron bars for stronger structure
- External paint (Plastic Emulsion or equivalent)



Balcony

- Antiskid tiles
- Spot LED lights & fan
- Iron grip of modern design
- Seepage protection treatment in balcony



Kitchen

- Lighting & Fixtures
- Fittings of Jaguar or equivalent
- Granite counter
- Stainless steel sink
- UPVC windows
- Duco / Italian PU coated door



Electrical

- Telephone wiring in living and Bedrooms
- High quality modern switches & protective MCBs
- Satellite TV / DTH wiring
- Copper wiring & PVC concealed conduit
- Sufficient light & power points
- Low consumption electricity lighting provision.



Living fixtures & Fan

- Duco / Italian PU coated doors
- UPVC windows
- Terrazo Floor tiles / Italian marble



External

- Beautiful Landscaping
- Beautiful & relaxing sun decks near pool
- Electric vehicle charging points



Swimming Pool

- swimming pool

