

PEOPLE BEHIND THE PROJECT

Supertech Ltd. – one of India's leading real estate developers came into inception close to 27 years ago. The company has been instrumental in redefining home buying for any customer around the country. With more than 60,000 satisfied customers & more than 20,000 residences delivered, the company is scaling new heights each day with more than 50 ongoing projects in different locations around the country.

With such scale and size comes an opportunity to redefine oneself each day. Global partners like Armani Casa, Yoo Studios - UK & ACC are but a few of the coveted names in the list that the company boasts of today. Like the pre-cast technology setup, the company is fast diversifying while also supporting various causes like Kaksha – an education initiative for the under-privileged.

Our Global partners

ARMANI CASA | YOO STUDIOS - UK | AEDAS | ACC

KEY HIGHLIGHTS-

Ongoing developments:

North Eye, Sector 74, Noida | ORB, Sector 74, Noida | Supernova, Sector 94, Noida | E-Square, Sector 96, Noida | The Romano, Sector 118, Noida | HillTown, Sector 2, Gurgaon - Sohna Road | Aadri, Sector 79 & 79B, Gurgaon & many more

Landmarks Delivered:

34 Pavilion, Sector 34, Noida | Capetown, Sector 74, Noida | Eco Village 1 – Greater Noida (W) | Eco Village 2 – Greater Noida (W) | Ecociti, Sector 137, Noida Expressway | Supertech Emerald Court, Sector 93-A, Noida Expressway & many more

KEY MILESTONES:

- Projects across 50 plus locations
- More than 60,000 satisfied customers
- Projects worth INR 500 billion in progress
- More than 80,000 units and 120 million sq. ft. of Real Estate under development
- Over 29 years of delivering world class projects in Residential, Retail, Hospitality IT Parks, Education and Corporate Spaces
- More than 40,000 units delivered having overall area of 50 million sq. ft.
- 22,217 units successfully delivered last three years
- 8,500 units more to be delivered in FY 2016-17
- 15,000 units more to be delivered in FY 2017-18
- Making 40,000 affordable homes under PMAY



METRO CONNECTIVITY



SUPERTECH SCHOOL



SUPERTECH HOSPITAL

PRESENTING



CROWN TOWER

~ Sector 74, Noida ~

★ ★ ★



RISE ABOVE THE ORDINARY
BE YOUR OWN KING



MY STUNNING SPACE.

Nothing adds more to family enjoyment than a well designed, sleek looking home. Keeping this in mind, at Crown Tower, a clutch of expert architects have given their focused attention to miniscule details and left no stone unturned to create aesthetically rich interiors that symbolize high-profile living to the core. It's my own stunning space.



MY LEISURE DESTINATION.

With great success comes an opportunity to enjoy life. Rejoice in your success at the stylishly appointed clubhouse boasting of every luxury facility that the privileged find anywhere. A spacious club room, a high-tech fitness center equipped with latest machines, an impressive swimming pool, billiards room, along with locker room facilities & more. It's my exclusive leisure destination.



UNIT PLAN

Type A

2BHK + 2 Toilets + Kitchen + Drawing/Dining + 3 Balconies

Super Area: 930 sq.ft. (86.4 sq.mt.)

Builtup Area: 765 sq.ft. (71.07 sq.mt.)

Balcony Area: 125 sq.ft. (11.63 sq.mt.)

Carpet Area: 564 sq.ft. (52.4 sq.mt.)



UNIT PLAN

Type B

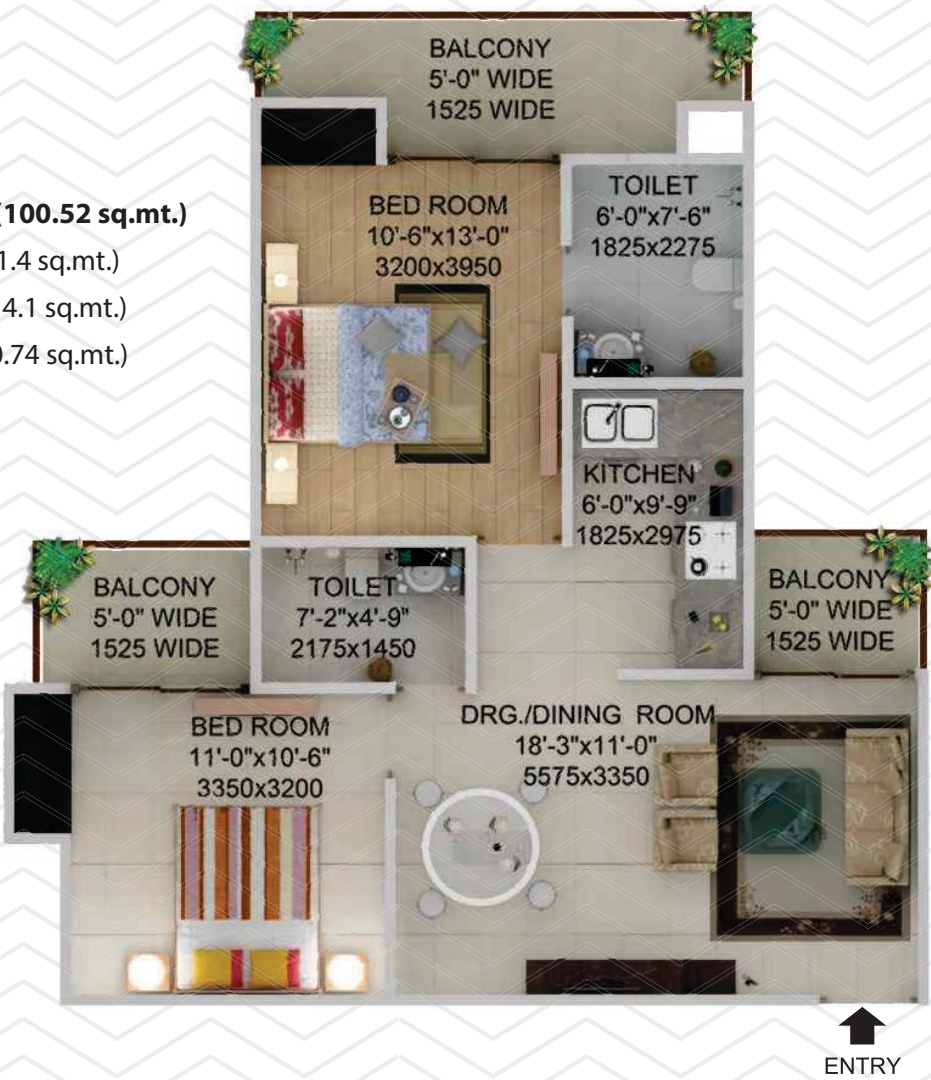
2BHK + 2 Toilets + Kitchen + Drawing/Dining + 3 Balconies

Super Area: 1082 sq.ft. (100.52 sq.mt.)

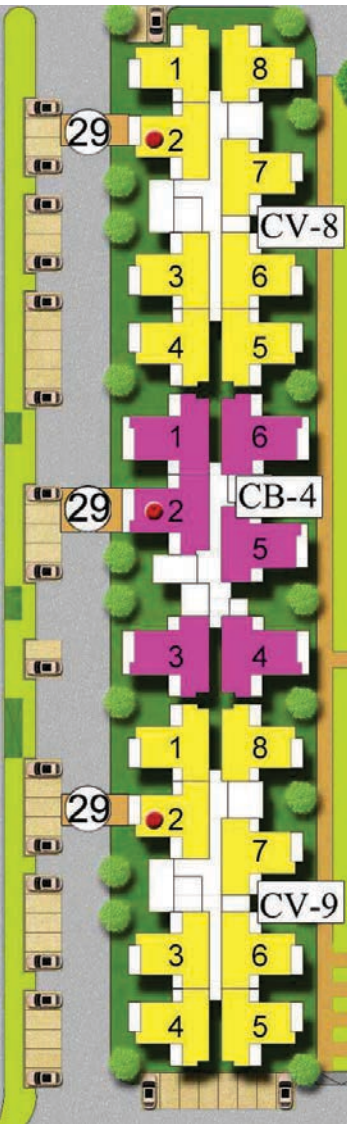
Builtup Area: 876 sq.ft. (81.4 sq.mt.)

Balcony Area: 153 sq.ft. (14.1 sq.mt.)

Carpet Area: 654 sq.ft. (60.74 sq.mt.)

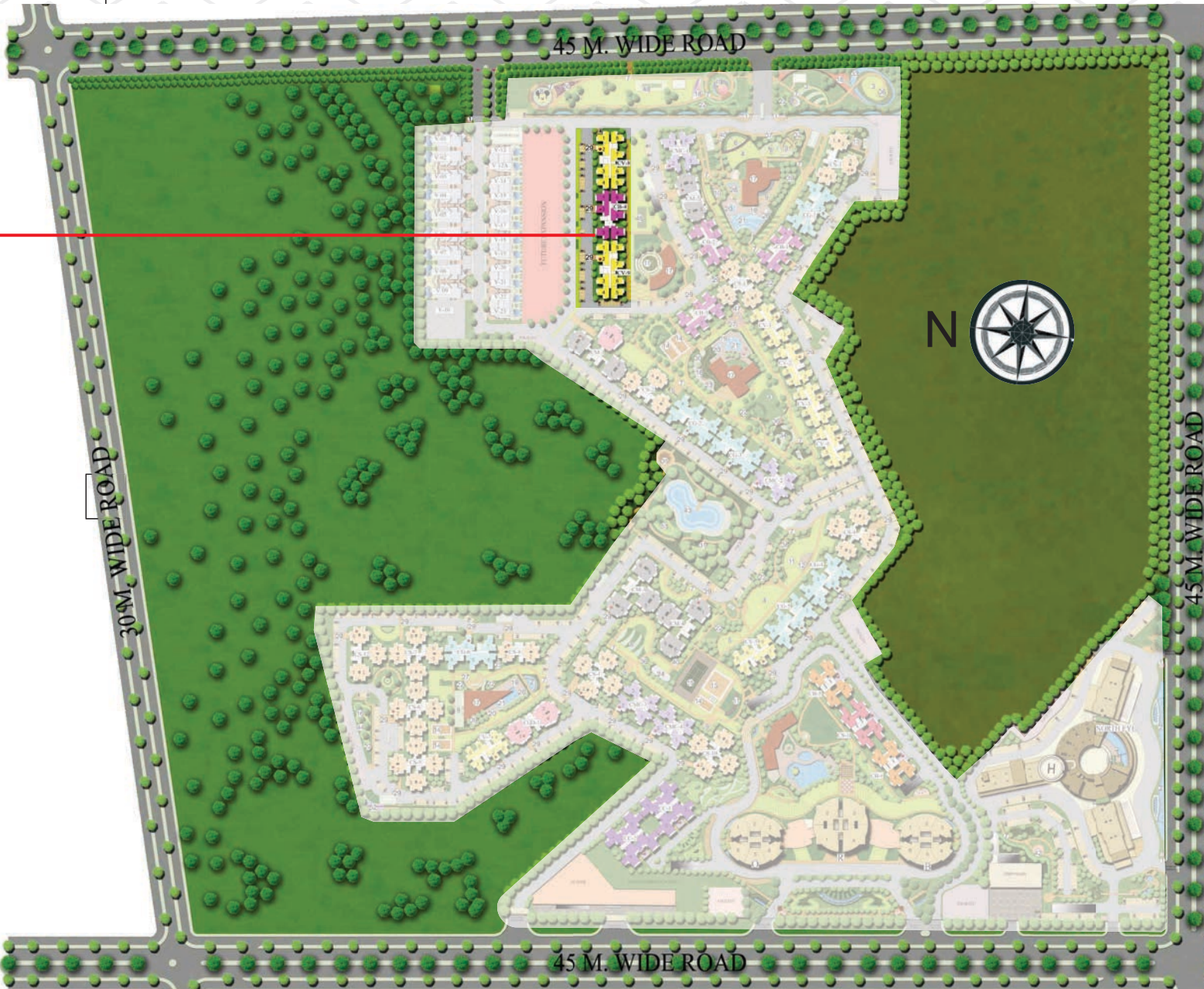


SITE PLAN

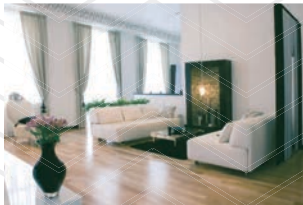


LEGEND:

- | | |
|---------------------------------|----------------------------|
| 1. Guardroom And Entrance Plaza | 28. Floating Deck |
| 2. Water Feature | 29. Tower Entry |
| 3. Physical Activity Garden | 30. Japanese Garden |
| 4. Lawn | 31. Putting Green |
| 5. Senior Citizen Garden | 32. Parterre Garden |
| 6. Yoga And Meditation Garden | 33. Lilly Pool |
| 7. Pathway And Jogging Track | 34. Sand Play Area |
| 8. Kid's Play Area | 35. Portal-9-plaza |
| 9. Seating Plaza And Planter | 36. Pavillion |
| 10. Seating Plaza And Trellis | 37. 2.5 M High Mural Wall |
| 11. Amphitheater | 38. Palm Beach Plaza |
| 12. Stage | 39. Palm Court |
| 13. Basket Ball Court | 40. Sculpture Garden |
| 14. Badminton Court | 41. Open Gym |
| 15. Tennis Court | 42. Light Sculpture |
| 16. Grass Hill | 43. Lake |
| 17. Club | 44. Triangle Plaza |
| 18. Flower Beds | 45. Wave Pool/water Stream |
| 19. Pool Deck | 46. Tropical Garden |
| 20. Kid's Pool | 47. Chess Plaza |
| 21. Main Pool | 48. Cricket Net |
| 22. Earth Mounds And Trees | 49. Time Garden |
| 23. Gravel | 50. Rose Garden |
| 24. Skating Rink | 51. Step Seating |
| 25. Jacuzzi | 52. Temple |
| 26. Open Shower | 53. Sand Bunker |
| 27. Paved Plaza | |



SPECIFICATIONS



Living Room

Floor - Vetrified Tiles Flooring
External Door and Window - Powder Coated Aluminum with Double Rebate
Electrical Fittings - Sheet and Switches
Walls - Oil Bound Distemper
Internal Door - Flush Shutter with Wooden Frame
Hardware - All Doors and windows with metal fittings along with mortice lock on the main door
Electrical - Copper wiring and PVC Concealed conduit, Provision for adequate light and power points as well as television and TV outlets with modular switches and protective M.C.B's.
Ceilings - Oil Bound Distemper



Dining

Floor - Vetrified Tiles Flooring
External Door and Window - Powder Coated Aluminum with Double Rebate
Electrical Fittings - Sheet and Switches
Walls - Oil Bound Distemper
Internal Door - Flush Shutter with Wooden Frame
Hardware - All Doors and windows with metal fittings along with mortice lock on the main door
Electrical - Copper wiring and PVC Concealed conduit, Provision for adequate light and power points as well as television and TV outlets with modular switches and protective M.C.B's.
Ceilings - Oil Bound Distemper



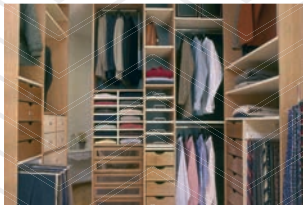
Bedroom

Floor - Vetrified Tiles Flooring
External Door and Window - Powder Coated Aluminum with Double Rebate
Electrical Fittings - Sheet and Switches
Walls - Oil Bound Distemper
Internal Door - Flush Shutter with Wooden Frame
Hardware - All Doors and windows with metal fittings along with mortice lock on the main door
Electrical - Copper wiring and PVC Concealed conduit, Provision for adequate light and power points as well as television and TV outlets with modular switches and protective M.C.B's.
Ceilings - Oil Bound Distemper



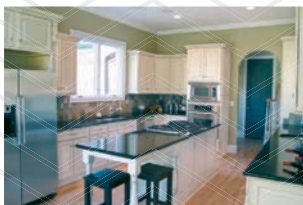
Master Bedroom

Floor - Vetrified Tiles Flooring with wardrobe in all bedrooms
External Door and Window - Powder Coated Aluminum with Double Rebate
Electrical Fittings - Sheet and Switches
Walls - Oil Bound Distemper
Internal Door - Flush Shutter with Wooden Frame
Hardware - All Doors and windows with metal fittings along with mortice lock on the main door
Electrical - Copper wiring and PVC Concealed conduit, Provision for adequate light and power points as well as television and TV outlets with modular switches and protective M.C.B's.
Ceilings - Oil Bound Distemper



Dressing Room

Floor - Vetrified Tiles Flooring
External Door and Window - Powder Coated Aluminum with Double Rebate
Electrical Fittings - Sheet and Switches
Walls - Oil Bound Distemper
Internal Door - Flush Shutter with Wooden Frame
Hardware - All Doors and windows with metal fittings along with mortice lock on the main door
Electrical - Copper wiring and PVC Concealed conduit, Provision for adequate light and power points with modular switches and protective M.C.B's.
Ceilings - Oil Bound Distemper



Kitchen

Floor - Vetrified Tiles Flooring
External Door and Window - Powder Coated Aluminum with Double Rebate
Electrical Fittings - Sheet and Switches
Walls - Ceramic tiles of 2' height from the platform
Fittings - Stainless steel sink with C.P. Fittings Modular Kitchen with RO system
Internal Door - Open
Hardware - All Doors and windows with metal fittings
Electrical - Copper wiring and PVC Concealed conduit, Provision for adequate light and power points with modular switches and protective M.C.B's.
Water Supply - Underground and Overhead water tanks with pumps and 24 hours water supply.
Individual R.O plant Standard make in each kitchen.
Ceilings - Oil Bound Distemper



Toilet

Floor - Ceramic Tiles Flooring
Electrical Fittings - Sheet and Switches
Walls - Ceramic tiles of 7' height
Fittings - Washbasin WC & C.P. Fittings
Internal Door - Flush Shutter
Hardware - All Doors and windows with metal fittings
Electrical - Copper wiring and PVC Concealed conduit, Provision for adequate light and power points with modular switches and protective M.C.B's.
Water Supply - Underground and Overhead water tanks with pumps and 24 hours water supply.
Ceilings - Flase Ceiling



Balconies

Floor - Ceramic Tiles Flooring
Electrical Fittings - Sheet and Switches
Walls - Oil Bound Distemper
Electrical - Copper wiring and PVC Concealed conduit, Provision for adequate light and power points
Ceilings - Permanent paint finish



Lift

Floor - P.V.C. Flooring



Lobbies/Corridor

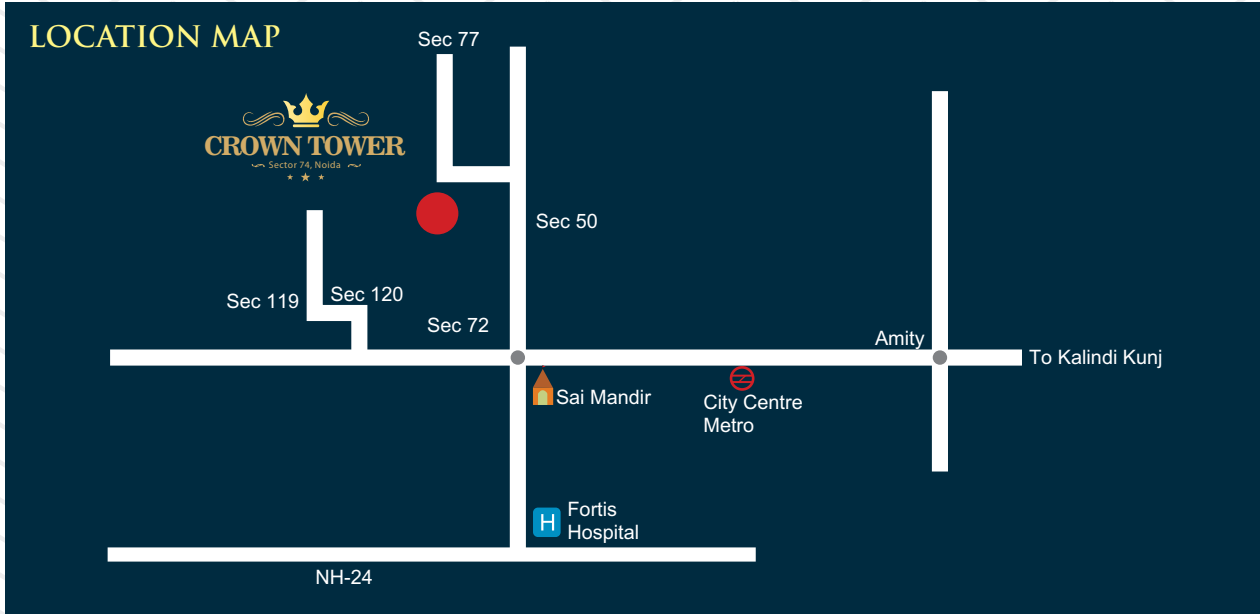
Floor - Kota Stone/Vetrified Tiles
Walls - Oil Bound Distemper
Electrical - Copper wiring and PVC Concealed conduit



Exterior Finish

Walls - Texture Paint, 100% Exterior Acrylic Emulsion Paint

NOTE: Tv/ Telephone Points will be provided in all Rooms & Toilet.
Disclaimer: Unit Layout, Master Layout & Specifications listed above are tentative and can be changed at the sole discretion of Builder/Developer.



THANK YOU

Marketed by:



Madhyam.com

Follow us on:  /teammadhyam  /teammadhyam

E-mail: info@madhyam.com

Cyprus (Europe) | Noida | Gurgaon | Faridabad | Bhiwadi | Vrindavan | Chandigarh