

**LET US EMBARK ON A JOURNEY TO UNCOVER
THE MYSTERY ABOUT A VERY PRIVATE LUXURY LIVING EXPERIENCE**

Luminare
LUXURY PRIVATE RESIDENCES

Location Map



Location

- **Accessibility Advantage** : 60 meter wide sector road
- **Location Advantage** : In close proximity to Rapid Metro Network, Golf Course, Ascendas SEZ, Grand Hyatt Residences & proposed Trump Tower
- **Connectivity Advantage** : 45 min drive from International Airport, Delhi
- **Infrastructure Advantage** : Close to major schools, shopping malls, hospitals and business hub of the city

The Project



- Land area : 7 acres (Approx.)
- Total units : 360
- Total towers : 03
- Height : G + 30

Site Layout



Apartment Configuration

3 BHK + servant quarter	–	2,985 sqft
4 BHK + servant quarter	–	3,625 sqft
Duplex Penthouse	–	4,887 sqft

Advantage - Luminare

- **Private Luxurious Residences with premium specifications by Mahindra Lifespaces – The Real Estate development business of USD 16.9 billion Mahindra Group**
- **Investment Partner – Standard Chartered Bank**
- **Construction Partner – TATA Projects**
- **Strategically located in Sector – 59, Gurgaon amidst The Aravalis & imminent Luxury Destination in City (Golf Course Extension Road)**
- **In close vicinity to upcoming biggest ever IT office destination of the city**
- **Wrap around balconies for the panoramic views**
- **Corner Homes – Experience life while keeping the world at bay**
- **Private Elevator Lobby – Let nothing enter your world without your permission**
- **8 Elevators + 1 Service Elevator per Tower (2 Elevators per Apartment)**
- **Only 360 apartments in entire complex – detailed designing – envisaged coterie of likeminded individuals – every apartment is ~INR 4 Cr. or plus**
- **Escalation Free Price**
- **Possession Linked Payment Plans**

Luminare USPs



- Wrap around balconies for the panoramic views
- Experience life in 70 mm – greet the Aravalis every day

Luminare USPs



- Bespoke elevator as private
as your haven
- Let nothing enter your world
without your permission

Luminare USPs



- Corner offices to corner homes
- Let the world know you have arrived – without saying anything at all

Project Specifications



- VRV air-conditioning
- Modular kitchen with Chimney & Hob
- Italian marble flooring in living areas
- Wooden flooring in bedrooms
- Floor to floor height of 3.2 meter
- Double glazed windows
- Premium fittings and fixtures in bathrooms

Project Amenities

- Urban river with gazebos to relax
- State of the art Clubhouse with an AV room, Gymnasium, Squash Court, Swimming Pool and much more
- Multi cuisine restaurant for a fine dining experience
- Kids play area, Outdoor Tennis court and Basketball Area



Booking Details

If we have managed to capture your attention – we welcome you
to book a home soon..

3BHK + SQ	-	INR 10 Lac
4BHK + SQ	-	INR 15 Lac
Penthouse	-	INR 15 Lac

Cheques to be drawn in favor of **“Mahindra Homes Private Limited”**

Layouts

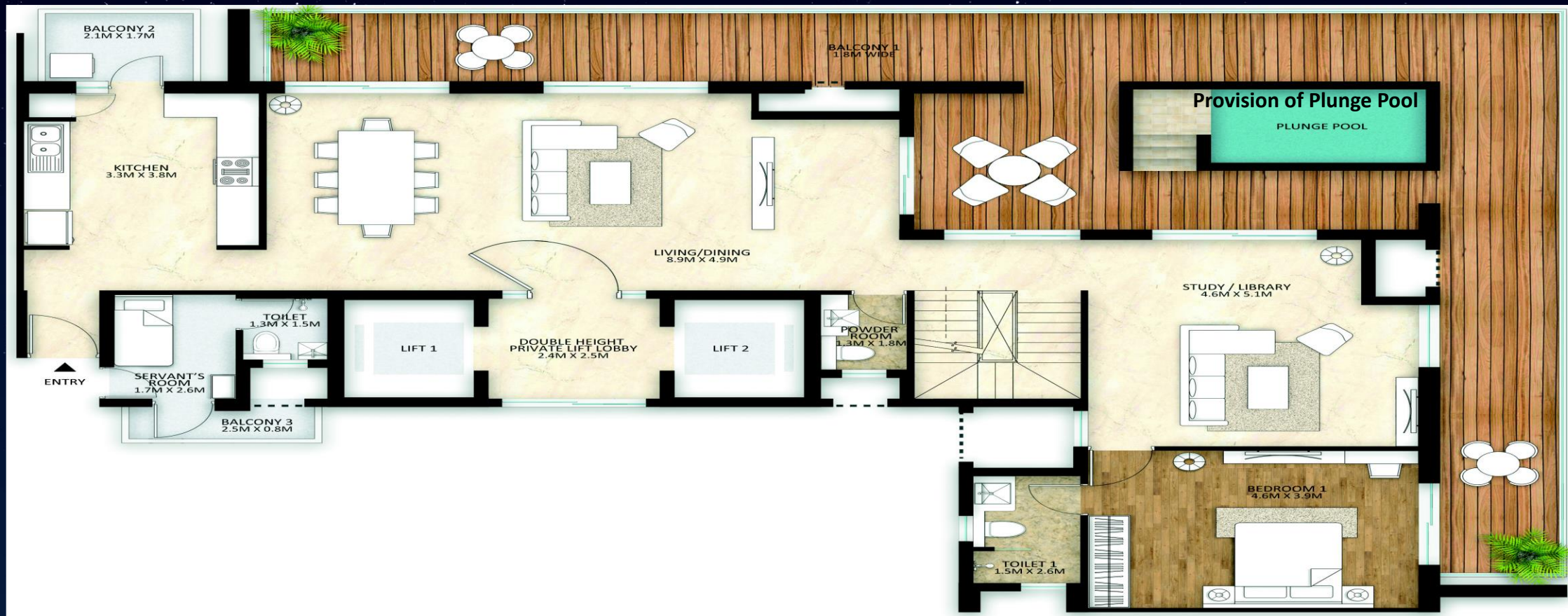
Unit Layout - 3BHK



Unit Layout - 4BHK



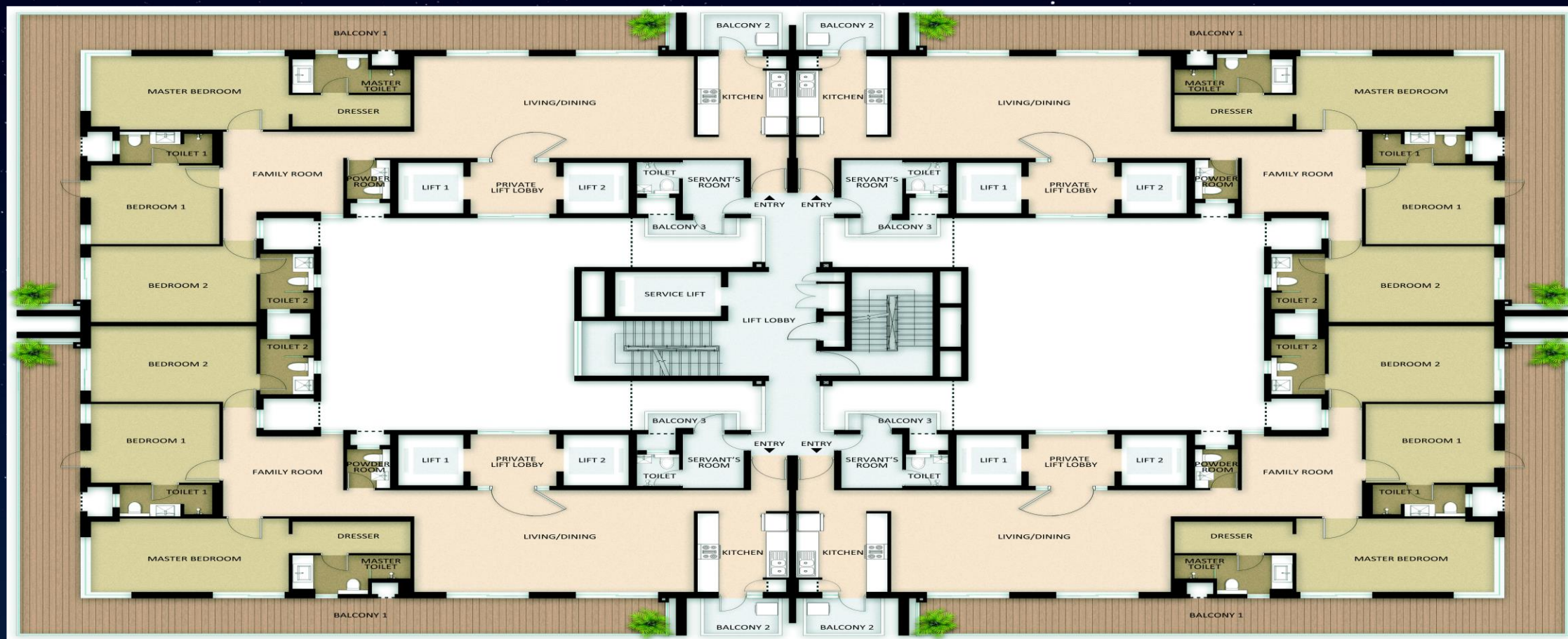
Duplex Penthouse – Lower Level



Duplex Penthouse – Upper Level



Luminare Sirius – Typical Floor Layout



IT'S VERY PRIVATE

THANK YOU