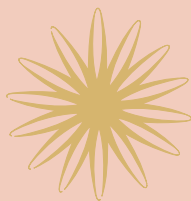




expect the best

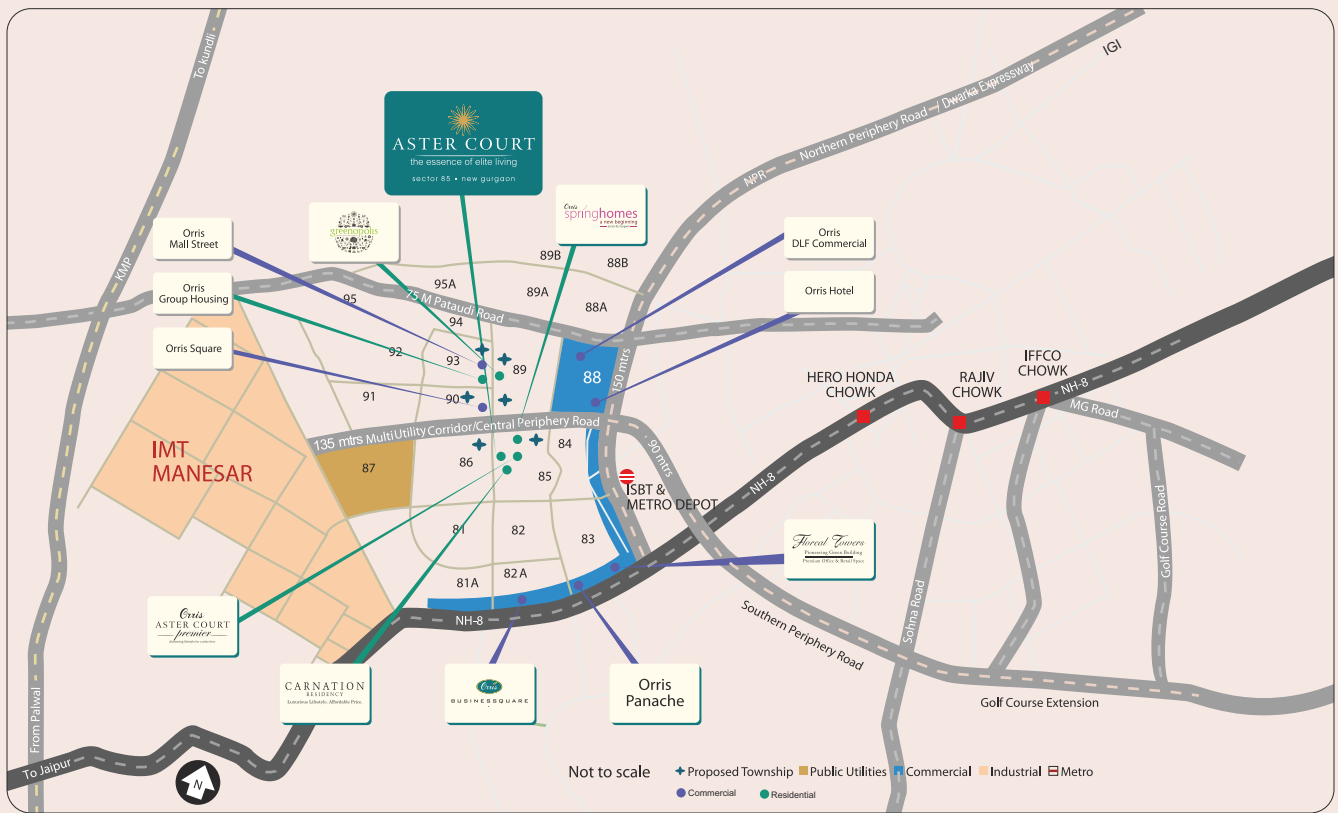


ASTER COURT

the essence of elite living

sector 85 • new gurgaon

PRIME LOCATION SECTOR 85, NEW GURGAON



"Disclaimer: Visuals shown are an artistic impression and not a legal offering. All specifications are indicative and subject to change without prior notice."

1sq.mtr.=10.76 sq.ft. Map not to scale





An integral part of 29 acres of group housing, **Aster Court** is situated in a prime location in sector 85, New Gurgaon, right in the midst of a new world where business complexes, 5 star hotels, already operational well known industries, amusement & water parks are all within close proximity.

With options of **2, 3, 3+1 BHK**, **Aster Court** gives you a life set in luxury with its well planned infrastructure along with aesthetic outdoor landscaping and a well equipped high-tech club.

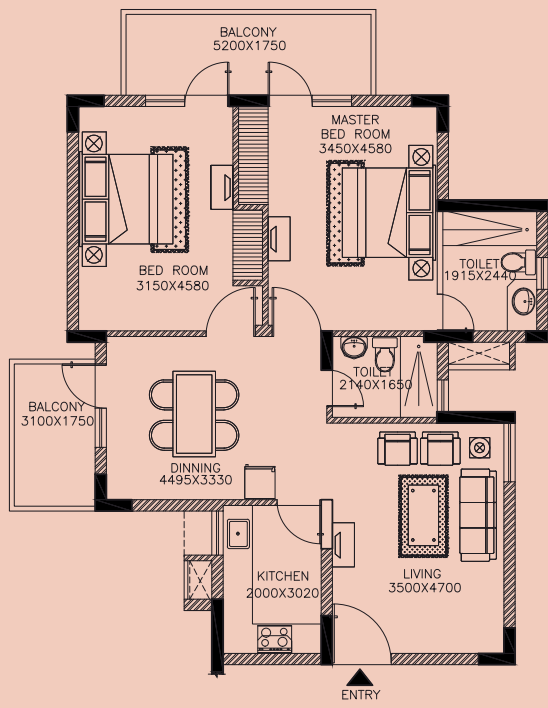
We at **Orris**, give you an essence of luxury in the space that surrounds you at a cost that makes you feel at ease. We present to you **the essence of elite living**.

- Strategically located within hailing distance from NH8
- Well connected and in close proximity to Dwarka Expressway, KMP Expressway, Manesar, RIL SEZ, IGI and Domestic airport
- Easy accessibility to proposed Metro station and ISBT
- In close proximity to already operational known industries such as Maruti, Honda, GIVO, Tilda etc.
- Approx 5 min drive from Haldiram's
- Approx 40 mins drive from Dhaula Kuan

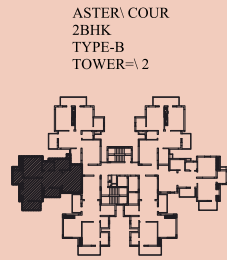
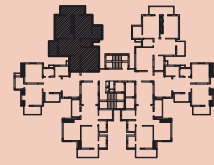
- Dedicated club with state of the art health club, swimming pool, gymnasium and well designed sports ground with tennis, squash & badminton court
- Basic amenities such a supermart/clinic/primary school/creche/children tot-lot all met within the complex
- Open air theater
- Multi purpose hall
- Water harvesting
- Ample parking Space
- Superior quality construction & an earth quake resistant structure as per seismic zone IV
- Power back up
- Excellent facility management system.
- CCTV at the main entrance with round the clock security
- Well ventilated, uncluttered apartments with natural flow of light

- landscaped grounds and well planned infrastructure by Internationally renowned architect Nelson (U.S.A)
- 4 side open location
- Pocket friendly sizes
- Project approved by banks

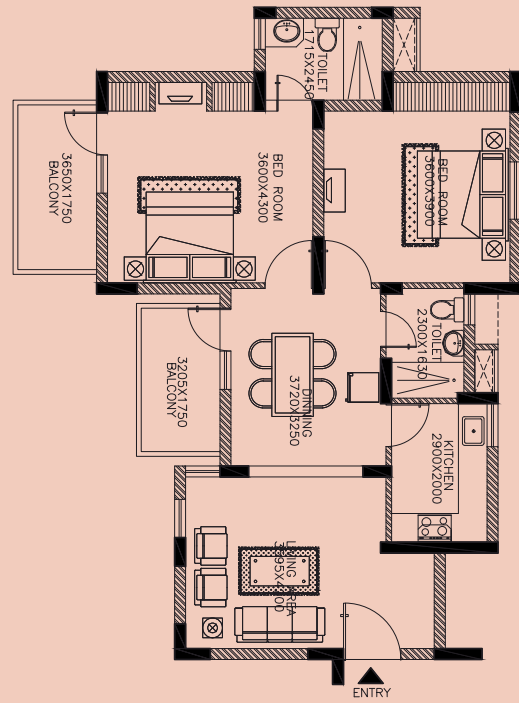




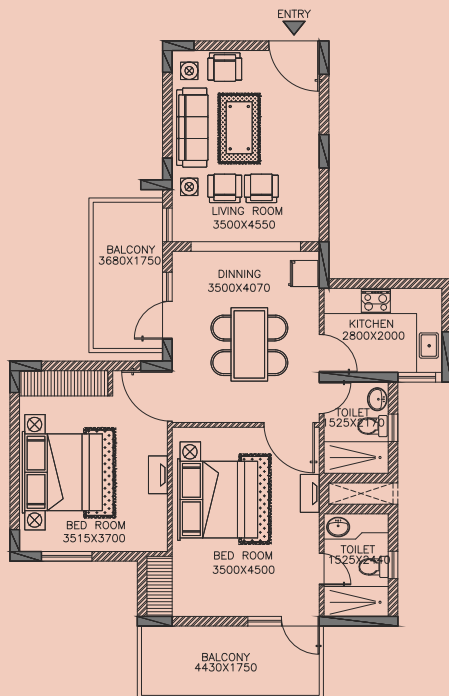
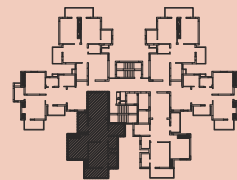
ASTER\ COUR
2BHK
TYPE-A
TOWER=1 2

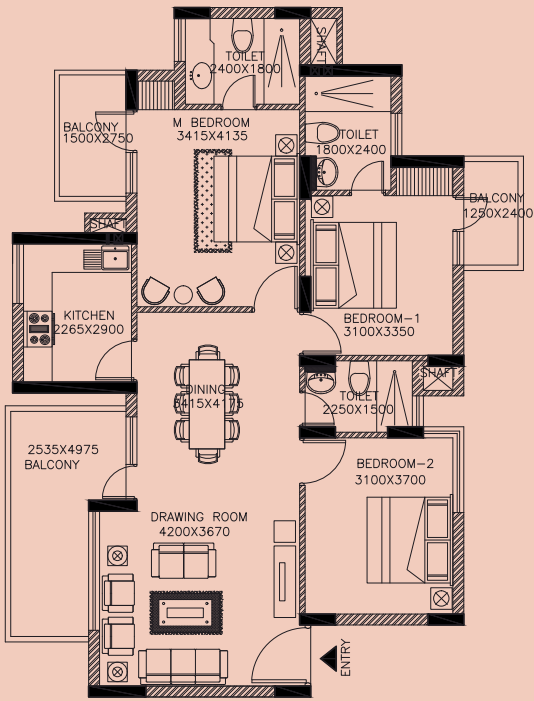


ASTER\ COUR
2BHK
TYPE-B
TOWER=1 2

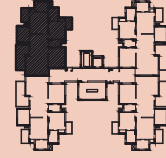


ASTER\ COUR
2BHK
TYPE-C
TOWER=1 2

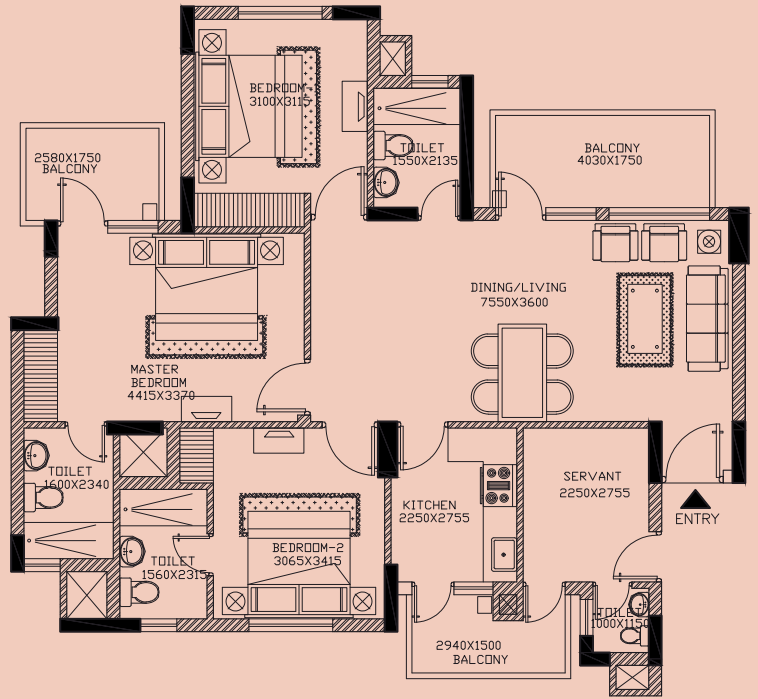




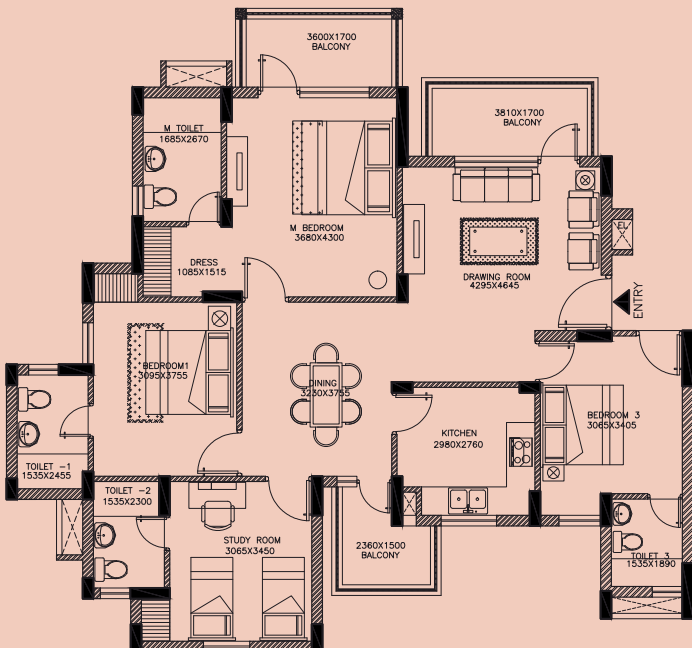
ASTER \ COUR
3BHK
TOWER \ => 3A,3B,3C,3D \ &



ASTER \ COUR
3BHK+S
TOWER \ => 3F,3G,3H,3I \ &



ASTER \ COUR
4BHK
TOWER \ => 4



PROPOSED SPECIFICATIONS FOR ASTER COURT

LOCATION	FLOOR	WALLS	CEILING	DOORS	WINDOWS	IRONMONGERY	OTHERS
LIVING DINNING	VITRIFIED TILES	ACRYLIC WASHABLE DISTEMPER	ACRYLIC WASHABLE DISTEMPER	FLUSH DOOR WITH HARDWOOD FRAME	UPVC FRAME AND GLAZING	ALUMINIUM ANODIZED/ HANDLES & LATCHES WITH MORTICE LOCKS	MODULAR TYPE SWITCHES & SOCKETS, COPPER WIRING
BED ROOMS	VITRIFIED TILES	ACRYLIC WASHABLE DISTEMPER	ACRYLIC WASHABLE DISTEMPER	FLUSH DOOR WITH HARDWOOD FRAME	UPVC FRAME AND GLAZING	ALUMINIUM ANODIZED/ HANDLES & LATCHES WITH MORTICE LOCKS	MODULAR TYPE SWITCHES & SOCKETS, COPPER WIRING
TOILETS	ANTISKID CERAMIC FLOOR TILES	COMBINATION OF CERAMIC TILES & ACRYLIC WASHABLE DISTEMPER	ACRYLIC WASHABLE DISTEMPER	FLUSH DOOR WITH HARDWOOD FRAME	UPVC FRAME AND GLAZING	ALUMINIUM ANODIZED/ HANDLES & LATCHES WITH MORTICE LOCKS	WHITE SANITARY FIXTURES & G.P. FITTINGS
KITCHEN	VITRIFIED TILES	COMBINATION OF CERAMIC TILES & ACRYLIC WASHABLE DISTEMPER	ACRYLIC WASHABLE DISTEMPER	FLUSH DOOR WITH HARDWOOD FRAME	UPVC FRAME AND GLAZING	ALUMINIUM ANODIZED/ HANDLES & LATCHES WITH MORTICE LOCKS	GRANITE COUNTER WITH STAINLESS STEEL SINK
BALCONIES	VITRIFIED TILES	EXTERIOR EMULSION PAINT AND MS RAILING FINISHED WITH SYNTHETIC ENAMEL PAINT	ACRYLIC WASHABLE DISTEMPER	FLUSH DOOR WITH HARDWOOD FRAME		ALUMINIUM ANODIZED/ HANDLES & LATCHES WITH MORTICE LOCKS	
COMMON PASSAGE	INDIAN MARBLE	ACRYLIC EMULSION PAINT	ACRYLIC EMULSION PAINT				
MAIN STAIRCASE	INDIAN STONE (RISERS & TREADS)	ACRYLIC EMULSION PAINT WITH MS BALUSTERS FINISHED WITH SYNTHETIC ENAMEL PAINT & HANDRAIL	ACRYLIC WASHABLE DISTEMPER				
AMENITIES	100% POWER BACK-UP, PANIC ALARM, INTERCOM AT SECURITY GATE AND TOWER ENTRY. TELEPHONE POINT IN EACH FLAT.. COMMUNITY HALL, JOGGING TRACK & KIDS PLAY AREA.						
STRUCTURE	EARTHQUAKE RESISTANT RCC FRAMED STRUCTURE						
EXTERNAL DEVELOPMENT/ LANDSCAPE	REFLECTING POOL, DECK WITH METAL TRELLIS, SCULPTURED GARDEN & MAIN ENTRANCE PLAZA HUGE KIDS PLAY AREA, TENNIS COURT , BADMINTON COURT ETC						
LIFT	ONE PASSENGER & ONE SERVICE LIFT IN EACH TOWER.						

DESIGNED & LANDSCAPE BY INTERNATIONAL ARCHITECT - NELSON (U.S.A)

Expect the best

Nestled at prime locations in Delhi-NCR, all Oris projects concentrate on eco-friendly construction practices. The land as well as its location is the core of every project.

The company concentrates on providing premium services to its clients in the most responsive and communicative manner. The team work is evident in the fact that they strive to achieve the common goals through open communication, mutual support and a very positive attitude.

Oris has the best architects from around the world who design with an astute sense of blending spatial compatibility with trendy architecture. The company believes that each project should be delivered on time and each of the initiatives is directed to build trust in its clients.

The focal point of the company is to achieve the highest possible standards and establish trust, integrity and transparency with all its customers.

ongoing projects

Floral Towers Pioneering Green Building Premium Office & Retail Space

Floral Towers, a new age green commercial complex spread across approx 5 lacs sq. ft. with a mix of 30% retail and 70% office space.

CARNATION RESIDENCY Luxurious Lifestyle. Affordable Price. sector 85 • new gurgaon

Oris Carnation Residency is a part of 25.01 acres group housing project. 4 side open & an integrated colony, just 2 km away from NH8.

Oris ASTER COURT *premier* — *defining lifestyle for a select few* — sector-85 • new gurgaon

Oris Aster Court Premier is a part of 25.01 acres group housing project. The project is designed by world renowned architect Nelson, USA. It includes high-end club & has only 2, well ventilated apartments on each floor.

CURIO CITY

Plot No. T12, Sector 22 D, Yamuna Expressway

• Rectangular township directly facing Yamuna Expressway • Vastu compliant project • Gated community with 24 x 7 power and security • World class club house with spa, gym, swimming pool and amphitheatre • Indoor and outdoor sports facilities • 12 to 24 meter wide internal road network • Reputed school and Hospital within the township

Oris greenbay GOLF VILLAGE

Greenbay is designed as an international standard township with integrated residential and sporting-recreational areas. The 100 acre community incorporates a 12-hole golf course, premium residential plots, a full-facility Club House as well as futuristic developments like resort hotel, commercial tower, etc.



Strategically located in Sector 85, Gurgaon, Greenopolis is an innovative blend of green, efficient technologies creating an eco-friendly habitat. It is well-connected and in close proximity to Dwarka Expressway, KMP Expressway and IG Airport.

upcoming projects

Oris springhomes a new beginning Sector 85, Gurgaon

A residential group housing project spread over 10 acres of land with ultra modern facilities. 70% green area, landscaping done by a leading consultant.

Oris BUSINESS SQUARE sector 82a • new gurgaon

A self business generating project, Oris Business Square is spread over approx. 1 million sq. ft. It's designed for extra space & performance for upscale multinational offices.

Kohana living

Oris Kohana Living is located in Sector-85, 89, 90 & 93 of Gurgaon. A mix use Land Development is envisaged comprising of Built-up Villas, Independent floors and Plots along with commercial establishment.

CITY SQUARE — a lifestyle hub by Oris — sector 82, new gurgaon

A 0.40 million sq. ft. Commercial project located in close proximity to Dwarka Expressway, Patauli Road and Multi-utility Corridor joining Manesar and Northern Periphery Road.

Marketed by:



Madhyam Buildtech Pvt. Ltd.

Email: info@madhyam.co.in, Website: www.madhyam.co.in

SMS: MEL TO 56677

Noida | Gurgaon | Faridabad | Delhi | Bhiwadi | Mathura | Meerut | Chandigarh | Dehradun