



CAPE TOWN
Sector-74, Noida



MY DECISION.
CAPETOWN



Marketed by:



Madhyam.com

Follow us on: [f/teammadhyam](#) [t/teammadhyam](#)

E-mail: info@madhyam.com

Cyprus (Europe) | Noida | Gurgaon | Faridabad | Bhiwadi | Vrindavan | Chandigarh

CREDAI [f](#)





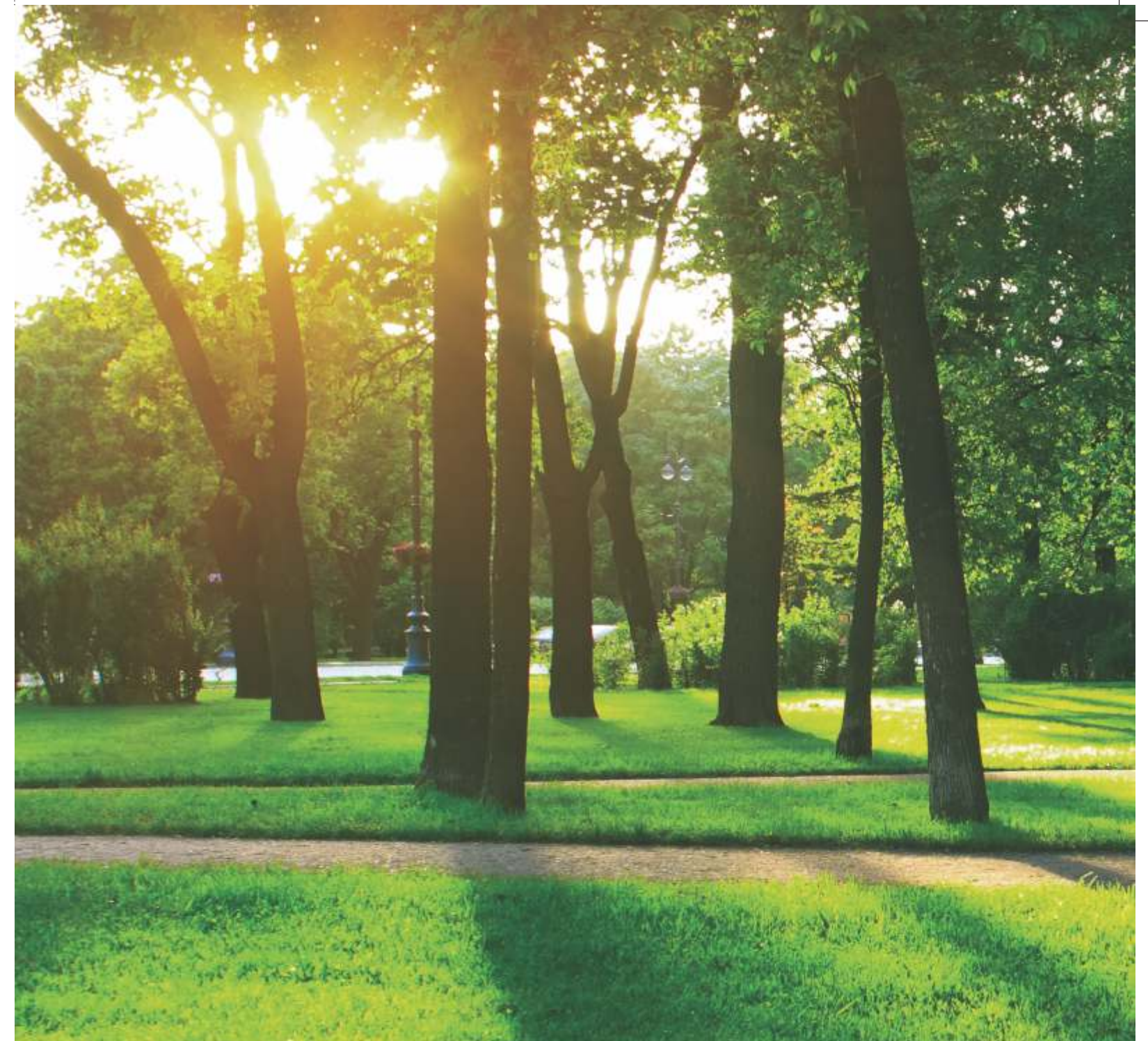
Imagine a verdant park teeming with lovely, bright eyed kids & tail wagging, ear flapping dogs, amidst lush greenery sprawling over acres & acres. Envisage miniscule water beads shimmering over a large, tranquil lake, flanked by picture perfect, comfortable benches. Envision thought defying amenities available only to the crème de la crème of society. Visualize an ultra luxurious lifestyle that's all set to change the paradigms of luxury.

Just some of the countless reasons that influenced my wise & timely decision to choose to make Capetown my dream home. To choose Capetown over a million others to own my dream home in. It's my aspiration. It's my dream come true. It's

MY DECISION. CAPETOWN.

MY IDYLIC HAVEN. CAPETOWN.

Take a break from life at an oasis amidst bustling towns. Wake up every day to 50 acres of lush green landscaped area. Embrace an inimitable lifestyle with aesthetically rich homes built around the best of amenities. Watch your family unearth the real joy of life with world-class, state-of-the-art facilities. Discover pure bliss at the magical herbal gardens and serene meditation centers. It's my own idyllic haven. Capetown.



MY GREEN RETREAT. CAPETOWN.

100 acres of soothing greens. A luxury few can afford in today's narrowing world. At Capetown you enjoy just that while breathing in fresh, natural air that reverses the cycle of city living. Savor the pleasant view of the verdant richness as you gaze upon it from your rambling balcony or take a leisurely stroll amidst the trees. A picture perfect environment for your family to flourish in. And for you to live stress free. It's my perfect green retreat. Capetown.





MY STUNNING SPACE. CAPETOWN.

Nothing adds more to family enjoyment than a well designed, sleek looking home. Keeping this in mind, at Capetown, a clutch of expert architects have given their focused attention to miniscule details and left no stone unturned to create aesthetically rich interiors that symbolize high-profile living to the core. It's my own stunning space. Capetown.



MY LEISURE DESTINATION. CAPETOWN.

With great success comes an opportunity to enjoy life. Rejoice in your success at the stylishly appointed clubhouse boasting of every luxury facility that the privileged find apt. A spacious club room, a high-tech fitness center equipped with latest machines, an impressive swimming pool, billiards room, along with locker room facilities & more. It's my exclusive leisure destination. Capetown.



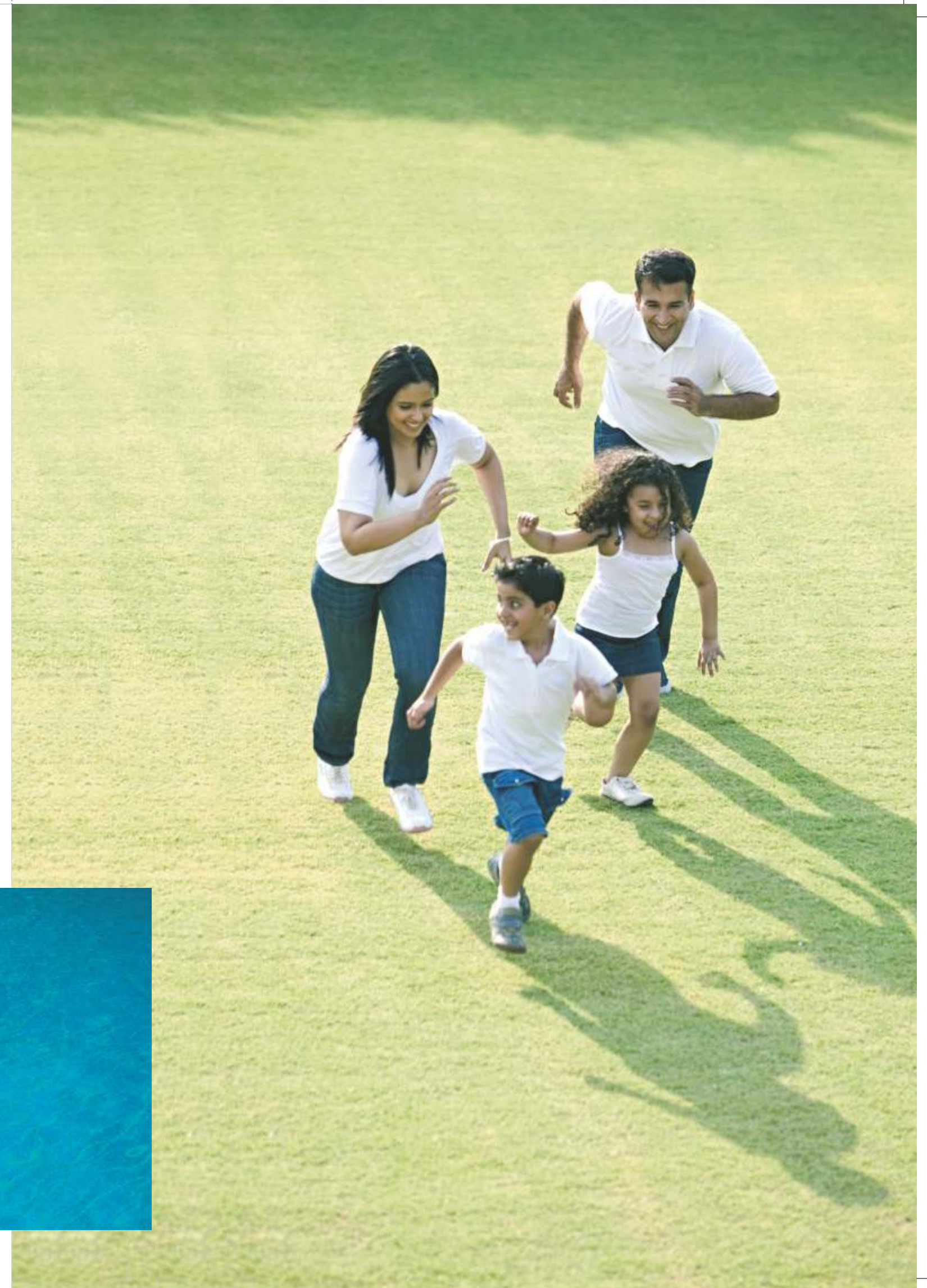
MY NATURE GARDEN. CAPE TOWN.

Indulge in an enchanting experience at Capetown's unique medicinal & herbal garden. Enjoy a carefree stroll amidst rare herbs, leisurely creepers, shapely leaves, sprawling roots, & soaring trees. Let Mother Nature be a lovable teacher of your kids. Ensure complete peace for your family at the world-class wellness center. Unwind yourself with a myriad of body treatments, hydrotherapy, aromatherapy, fish spa that aim to rejuvenate your mind, body and soul. What's more, rediscover yourself at the quiet meditation center. It's my soothing nature garden. Capetown.



MY CHILD'S PLAYGROUND. CAPE TOWN.

Light moments come to life when you and your kids play together. Weekends will never be the same again. Play with your folks and let them enjoy every bit of the off days with you. The breaks from work will delight you so much that you will really look forward to being with your family. Play a Tennis, Basketball or Badminton match in the play courts. Or simply, go to the play fields for an obsessing match. Here's a platform for your kids to grow in a way where playing is as important. It's my child's most deserved playground. Capetown.





MY EVER ACCESSIBLE ADDRESS CAPETOWN.

Strategically located at sector 74, Noida, at Capetown, a world-class infrastructure awaits your family. Enjoy here, pollution free air due to zero pollution industries. Witness here, glorious partnerships between industry and nature, luxury and lifestyle, administration and enterprise.

With so much in the vicinity, find everything you need to spruce up your family life, just at an arm's length. It's my address that accessible from everywhere. Capetown.



LOCATION MAP. CAPETOWN.





CONSTRUCTION @ CAPETOWN.

- 82% open landscaped area
- 4 side open vastu friendly plot
- 100 acre adjoining city greens
- In-house clubs with exclusive facilities
- 24 hour water & power supply
- Metro connectivity
- Extensive sports facilities like Swimming, Basketball, Volleyball, Badminton, Tennis etc.
- Health Club, Medical Centre, Ayurvedic Massage Centre
- Round the clock customer care
- Reticulated gas supply to every kitchen
- Shopping centre within the complex
- Ample parking space
- Jogging Track, Gymnasium, Herbal and Medicine Plantation

FLOOR PLAN

2BHK + 2 Toilets +
Kitchen + 3 Balconies



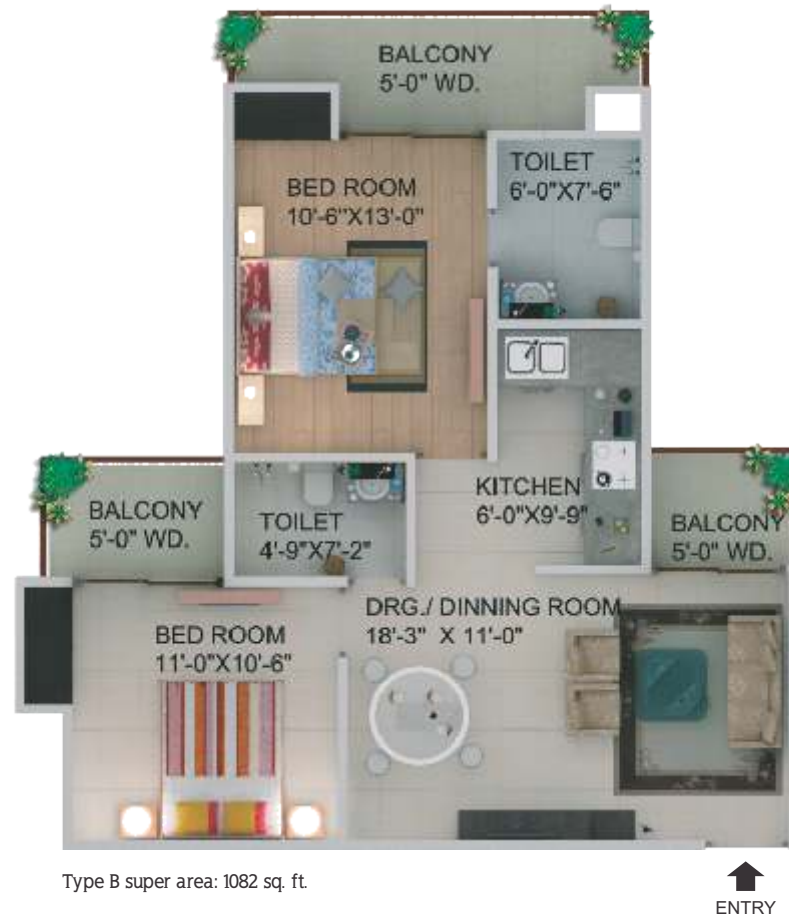
FLOOR PLAN

2BHK + Study + 2 Toilets +
Kitchen + Dining + 5 Balconies



FLOOR PLAN

2BHK + 2 Toilets + Kitchen +
Dining + 3 Balconies



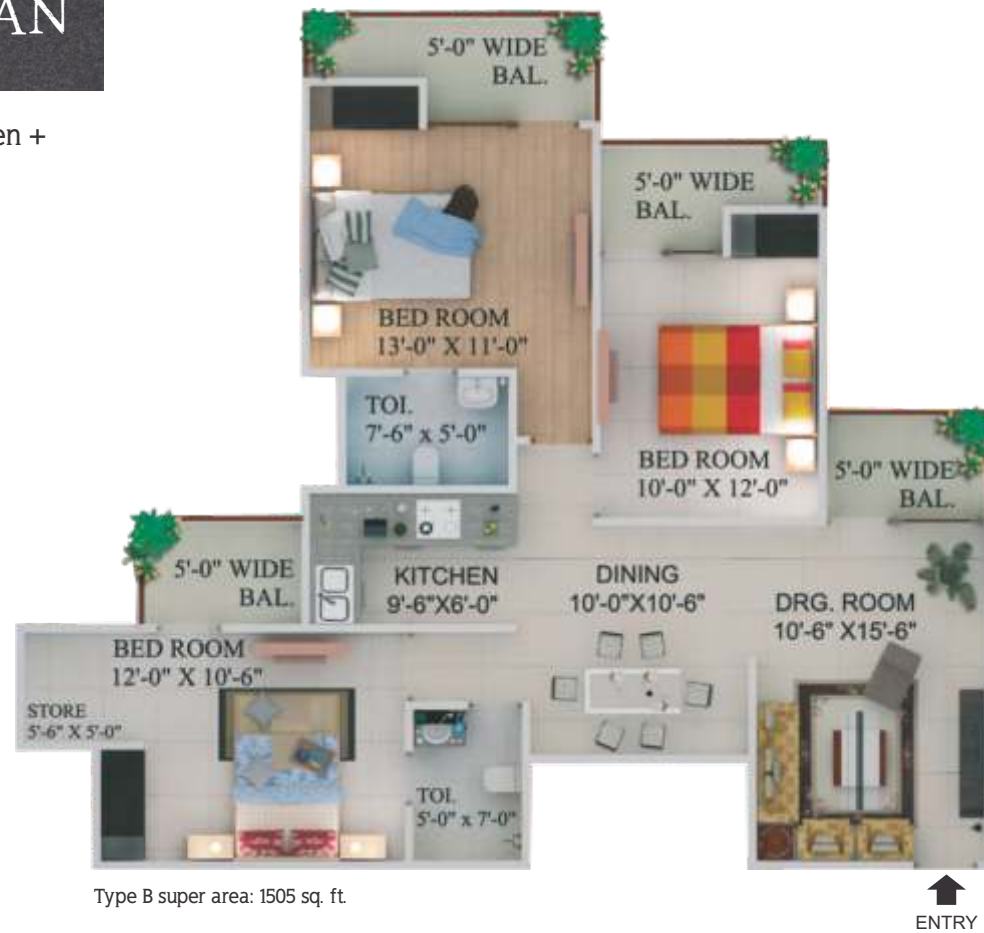
FLOOR PLAN

3BHK + 2 Toilets + Kitchen
+ Dining + 3 Balconies



FLOOR PLAN

3BHK + 2 Toilets + Kitchen +
Dining + 4 Balconies



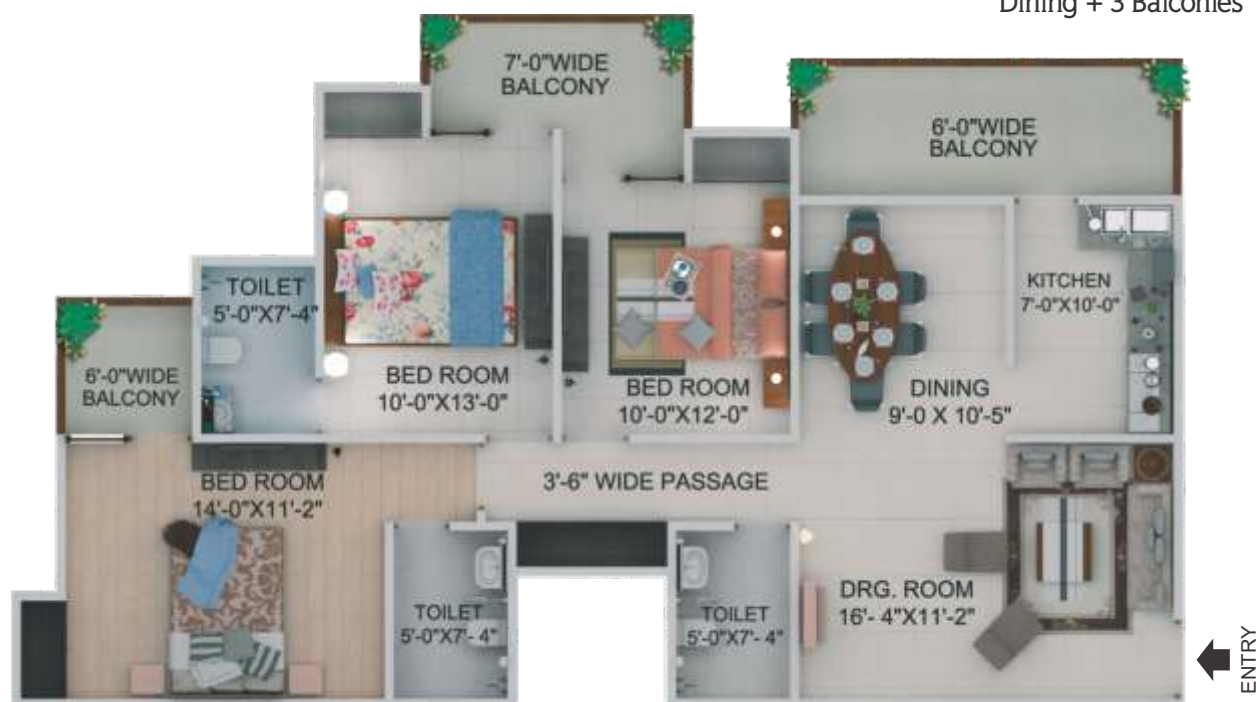
FLOOR PLAN

3BHK + 4 Toilets + Kitchen +
Dining + Study + 3 Balconies



FLOOR PLAN

3BHK + 3 Toilets + Kitchen +
Dining + 3 Balconies



FLOOR PLAN

4BHK + 4 Toilets + Kitchen + Dining
+ 4 Balconies + Servant Room



SPECIFICATIONS



Living Room

Floor - Vetrified Tiles
External Door and Window - Powder Coated Aluminum with Double Rebate
Electrical Fittings - Sheet and Switches
Walls - Oil Bound Distemper
Internal Door - Flush Shutter with Wooden Frame
Hardware - All Doors and windows with metal fittings along with mortice lock on the main door
Electrical - Copper wiring and PVC Concealed conduit, Provision for adequate light and power points as well as television and TV outlets with modular switches and protective M.C.B's.
Ceilings - Oil Bound Distemper



Dining

Floor - Vetrified Tiles
External Door and Window - Powder Coated Aluminum with Double Rebate
Electrical Fittings - Sheet and Switches
Walls - Oil Bound Distemper
Internal Door - Flush Shutter with Wooden Frame
Hardware - All Doors and windows with metal fittings along with mortice lock on the main door
Electrical - Copper wiring and PVC Concealed conduit, Provision for adequate light and power points as well as television and TV outlets with modular switches and protective M.C.B's.
Ceilings - Oil Bound Distemper



Bedroom

Floor - Vetrified Tiles
External Door and Window - Powder Coated Aluminum with Double Rebate
Electrical Fittings - Sheet and Switches
Walls - Oil Bound Distemper
Internal Door - Flush Shutter with Wooden Frame
Hardware - All Doors and windows with metal fittings along with mortice lock on the main door
Electrical - Copper wiring and PVC Concealed conduit, Provision for adequate light and power points as well as television and TV outlets with modular switches and protective M.C.B's.
Ceilings - Oil Bound Distemper



Master Bedroom

Floor - Vetrified Tiles/ Wooden Flooring with cupboard/wardrobe in all bedrooms
(If the tower is already constructed then it will not be optional)
External Door and Window - Powder Coated Aluminum with Double Rebate
Electrical Fittings - Sheet and Switches
Walls - Oil Bound Distemper
Internal Door - Flush Shutter with Wooden Frame
Hardware - All Doors and windows with metal fittings along with mortice lock on the main door
Electrical - Copper wiring and PVC Concealed conduit, Provision for adequate light and power points as well as television and TV outlets with modular switches and protective M.C.B's.
Ceilings - Oil Bound Distemper



Dressing Room

Floor - Wooden Flooring wardrobe/cupboard in all bedrooms
External Door and Window - Powder Coated Aluminum with Double Rebate
Electrical Fittings - Sheet and Switches
Walls - Oil Bound Distemper
Internal Door - Flush Shutter with Wooden Frame
Hardware - All Doors and windows with metal fittings along with mortice lock on the main door
Electrical - Copper wiring and PVC Concealed conduit, Provision for adequate light and power points with modular switches and protective M.C.B's.
Ceilings - Oil Bound Distemper



Servant Room

Floor - Ceramic Tiles
External Door and Window - Powder Coated Aluminum with Double Rebate
Electrical Fittings - Sheet and Switches
Walls - Oil Bound Distemper

Disclaimer: Unit Layout, Master Layout & Specifications listed above are tentative and can be changed at the sole discretion of Builder/Developer.



Kitchen

Floor - Vetrified Tiles
External Door and Window - Powder Coated Aluminum with Double Rebate
Electrical Fittings - Sheet and Switches
Fittings - Stainless steel sink with C.P. Fittings Modular Kitchen with RO system
Internal Door - Open
Hardware - All Doors and windows with metal fittings
Electrical - Copper wiring and PVC Concealed conduit, Provision for adequate light and power points with modular switches and protective M.C.B's.
Water Supply - Underground and Overhead water tanks with pumps and 24 hours water supply. Individual R.O plant Standard make in each kitchen.
Ceilings - Oil Bound Distemper



Toilet

Floor - Ceramic Tiles
Electrical Fittings - Sheet and Switches
Walls - Ceramic tiles of 7' height
Fittings - Washbasin WC & C.P. Fittings
Internal Door - Flush Shutter
Hardware - All Doors and windows with metal fittings
Electrical - Copper wiring and PVC Concealed conduit, Provision for adequate light and power points with modular switches and protective M.C.B's.
Water Supply - Underground and Overhead water tanks with pumps and 24 hours water supply.
Ceilings - Flase Ceiling



Balconies

Floor - Ceramic Tiles
Electrical Fittings - Sheet and Switches
Walls - Oil Bound Distemper
Electrical - Copper wiring and PVC Concealed conduit, Provision for adequate light and power points
Water Supply - Underground and Overhead water tanks with pumps and 24 hours water supply.
Ceilings - Permanent paint finish



Lift

Floor - P.V.C. Flooring
Electrical Fittings - Sheet and Switches



Lobbies/Corridor

Floor - Kota Stone/Vetrified Tiles
Walls - Oil Bound Distemper
Electrical - Copper wiring and PVC Concealed conduit



Exterior Finish

Walls - Texture Paint
Internal Door - Flush Shutter with Wooden Frame

NOTE: Tv/ Telephone Points will be provided in all Rooms & Toilet.

Disclaimer: Unit Layout, Master Layout & Specifications listed above are tentative and can be changed at the sole discretion of Builder/Developer.



FLAT TYPOLOGY

SIZE	TOWER NAME	UNIT
930 SQ. FT.	CAPE VISTA	CV
1082 SQ. FT.	CAPE BERRY	CB
1150 SQ. FT.	CAPE SILVER	CS
1295 SQ. FT.	CAPE GOLD	CG
1295 SQ. FT. (TYPE - 2)	CAPE GOLD	CG
1505 SQ. FT.	CAPE MONTE CARLO	CMC
1625 SQ. FT.	CAPE MANSION	CM
1945 SQ. FT.	CAPE GRANDE	CGD
2385 SQ. FT.	CAPE CASTLE	CC
VILLAS	VILLA	RV

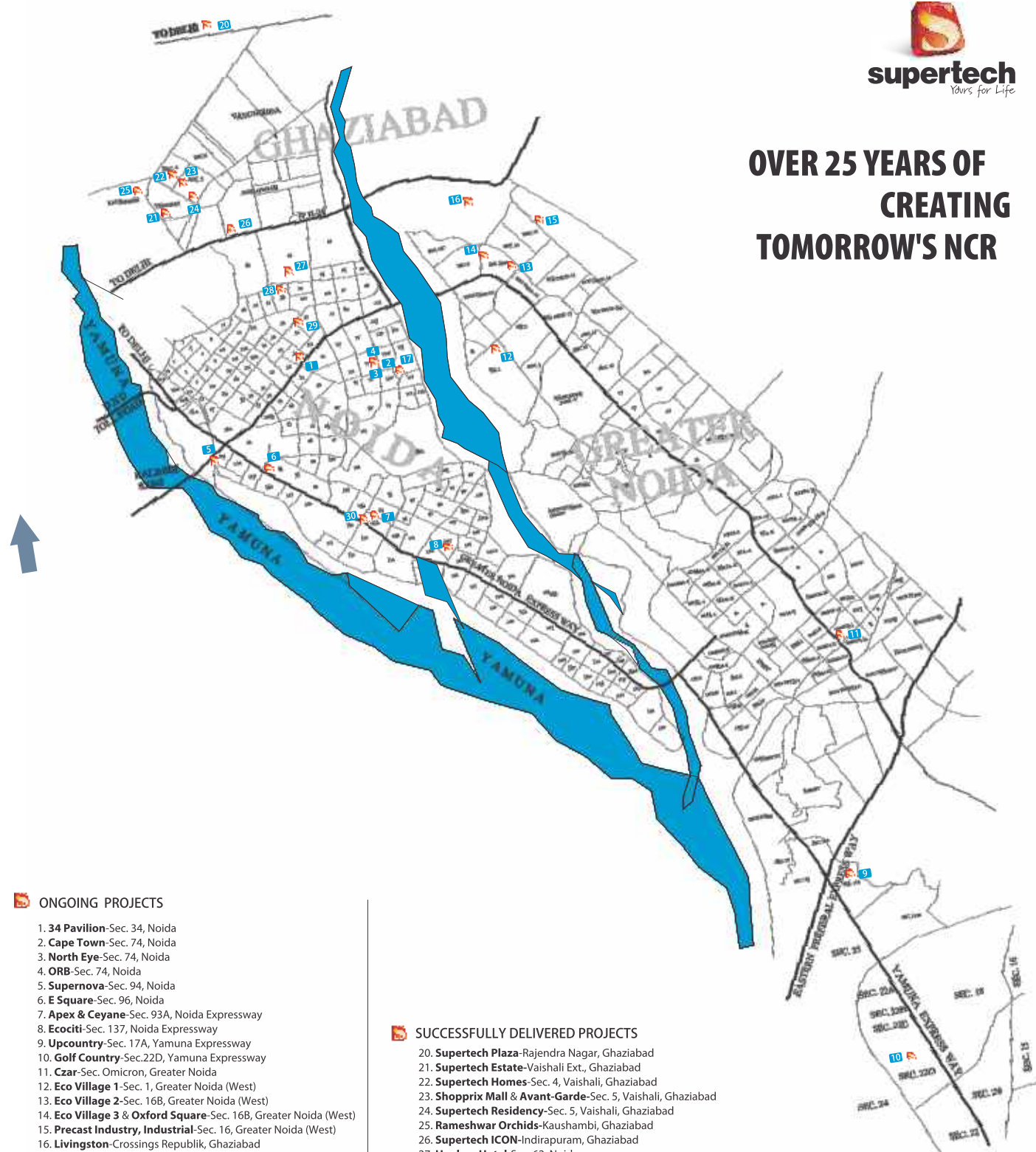
LEGEND:-

S.NO.	SPECIFICATIONS
1	GUARDROOM AND ENTRANCE PLAZA
2	WATER FEATURE
3	PHYSICAL ACTIVITY GARDEN
4	LAWN
5	SENIOR CITIZEN GARDEN
6	YOGA AND MEDITATION GARDEN
7	PATHWAY AND JOGGING TRACK
8	KID'S PLAY AREA
9	SEATING PLAZA AND PLANTER
10	SEATING PLAZA AND TRELLIS
11	AMPHITHEATER
12	STAGE
13	BASKET BALL COURT
14	BADMINTON COURT
15	TENNIS COURT
16	GRASS HILL
17	CLUB
18	FLOWER BEDS
19	POOL DECK
20	KID'S POOL
21	MAIN POOL
22	EARTH MOUNDS AND TREES
23	GRAVEL
24	SKATING RINK
25	JACUZZI
26	OPEN SHOWER
27	PAVED PLAZA
28	FLOATING DECK
29	TOWER ENTRY
30	JAPANESE GARDEN
31	PUTTING GREEN
32	PARKERRE GARDEN
33	LILLY POOL
34	SAND PLAY AREA
35	PORTAL-9-PLAZA
36	PAVILLION
37	5.0 M HIGH PORTAL WALL
38	PALM BEACH PLAZA
39	PALM COURT
40	SCULPTURE GARDEN
41	OPEN GYM
42	LIGHT SCULPTURE
43	LAKE
44	TRIANGLE PLAZA
45	WAVE POOL / WATER STREAM
46	TROPICAL GARDEN
47	CHESS PLAZA
48	CRICKET NET
49	TIME GARDEN
50	ROSE GARDEN
51	STEP SEATING
52	TEMPLE
53	SAND BUNKER





OVER 25 YEARS OF CREATING TOMORROW'S NCR



ONGOING PROJECTS

1. **34 Pavilion**-Sec. 34, Noida
2. **Cape Town**-Sec. 74, Noida
3. **North Eye**-Sec. 74, Noida
4. **ORB**-Sec. 74, Noida
5. **Supernova**-Sec. 94, Noida
6. **E Square**-Sec. 96, Noida
7. **Apex & Ceyane**-Sec. 93A, Noida Expressway
8. **Ecociti**-Sec. 137, Noida Expressway
9. **Upcountry**-Sec. 17A, Yamuna Expressway
10. **Golf Country**-Sec.22D, Yamuna Expressway
11. **Czar**-Sec. Omicron, Greater Noida
12. **Eco Village 1**-Sec. 1, Greater Noida (West)
13. **Eco Village 2**-Sec. 16B, Greater Noida (West)
14. **Eco Village 3 & Oxford Square**-Sec. 16B, Greater Noida (West)
15. **Precast Industry, Industrial**-Sec. 16, Greater Noida (West)
16. **Livingston**-Crossings Republik, Ghaziabad
17. **The Romano**-Sector 118, Noida
18. **Araville**- Sector 79, Gurgaon
19. **48 Canvas**- Sector 79, Gurgaon
20. **Hues** - Sector 68, Gurgaon
21. **Eco Village 4**-Sec. 16B, Greater Noida (West)

SUCCESSFULLY DELIVERED PROJECTS

20. **Supertech Plaza**-Rajendra Nagar, Ghaziabad
21. **Supertech Estate**-Vaishali Ext., Ghaziabad
22. **Supertech Homes**-Sec. 4, Vaishali, Ghaziabad
23. **Shopprix Mall & Avant-Garde**-Sec. 5, Vaishali, Ghaziabad
24. **Supertech Residency**-Sec. 5, Vaishali, Ghaziabad
25. **Rameshwar Orchids**-Kaushambi, Ghaziabad
26. **Supertech ICON**-Indrapuram, Ghaziabad
27. **Hyphen Hotel**-Sec. 62, Noida
28. **Supertech House**-Sec. 58, Noida
29. **Shopprix Mall**-Sec. 61, Noida
28. **Supertech Emerald Court**-Sec. 93A, Noida Expressway

Key Milestones:

• More than 12,000 residential units delivered • Projects across 38 locations • More than 60,000 satisfied customers • Over 25 years of delivering world class projects in Residential, Retail, Hospitality IT Parks, Education and Corporate Spaces • Projects worth INR 180 billion in progress • Over 90 million square feet of real estate under development • Delivery target of 10,000 units across different projects for year 2014 • Total number of Units under construction are 60,000.