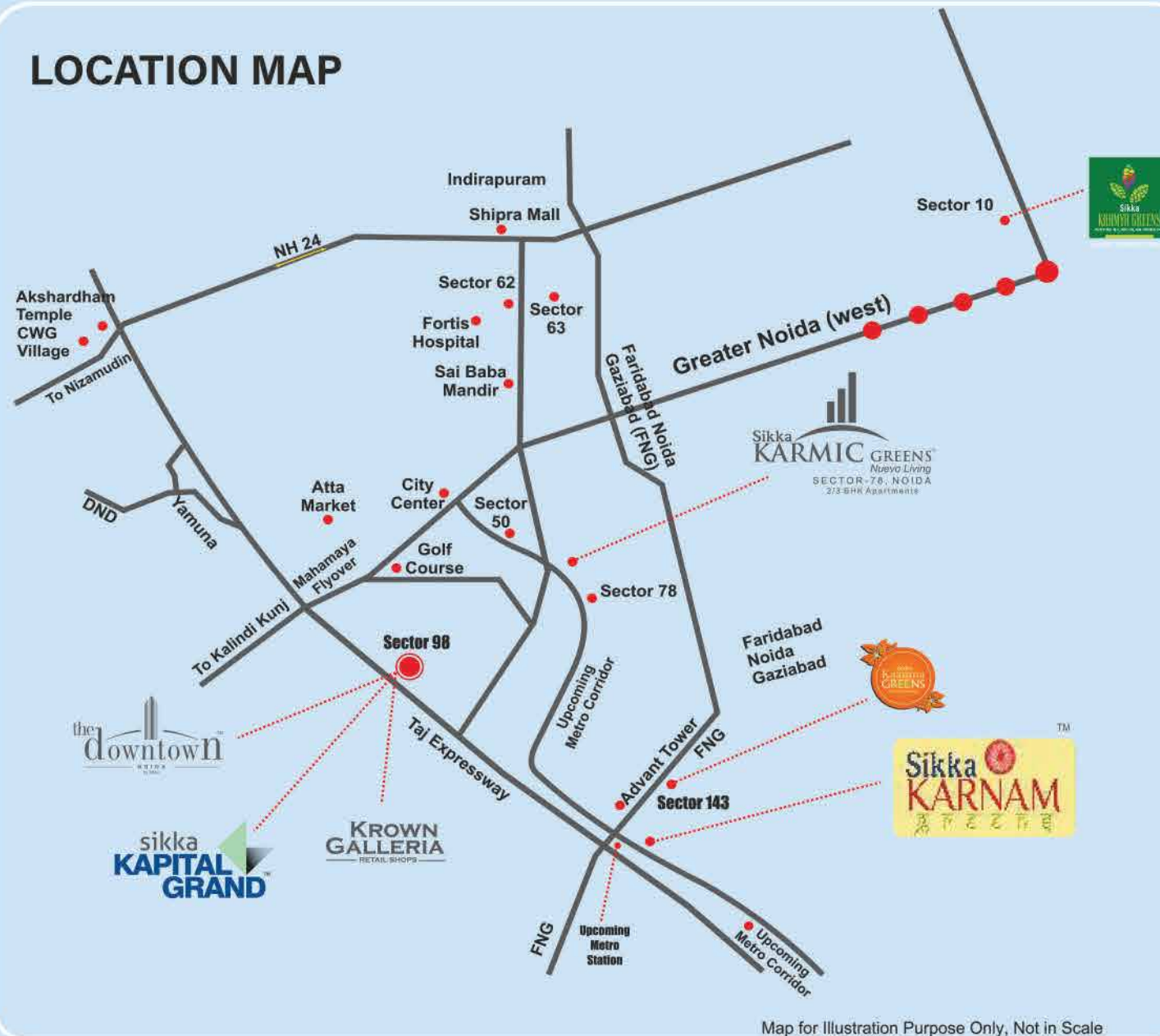


## LOCATION MAP



# THE EXOTIC WORLD of SIKKA KARNAM GREENS



**Sikka** <sup>TM</sup>  
**KARNAM**  
GREENS

2/3/4 BHK Apartments & Penthouses  
Sec 143B @ Expressway & FNG, Noida



Sikka Karnam Greens

Site: Plot No. 1(A), Sec-143B, Expressway & FNG, Noida

Join us at:  

Member of  
**CREDAI**





## SHINING LINEAGE

After having established itself in the year 1986, within a period of over 36 years Sikka has Today gone on to Become a Multilocal & Multifaceted Organization & in the Process has constituted Strong Roots & Presence Across India.

Ever since its inception, Sikka has been Pushing the Boundaries to Create Spaces that are Unrivalled in Luxury, Stature and Design, with a keen eye on the Future & a Sound knowledge base of the global business Environment & Trends.

Today Sikka has a footprint of over 10 million sq. ft. of Built-up Area under its wings, with Plans to Build another 3 million sq. ft. area by the year 2023.

Along with mega stakes in the Real Estate Arena, Sikka is also a Distinguished Business Entity in the Hospitality Industry & Education.

Moving Forward Sikka is now all geared up to challenge itself, exceed all expectations and usher the New Age India. The Proud India.



Sikka KARNAM  
सिखा कर नाम

ACTUAL SITE  
PHOTOGRAPH







**SEC 143B @  
EXPRESSWAY  
& FNG, NOIDA**



## SITE LAYOUT



- 1 Entry/Exit
- 2 Entrance Court
- 3 Security
- 5 Drop-off Point
- 6 Water Body & Fountain
- 7 Dedicated Hassle Free Parking
- 8 Landscaped Park
- 9 Conventional Hall
- 10 Swimming Pool
- 11 Children's Play Area
- 12 Badminton Court
- 13 Tennis Court
- 14 Half Basketball Court
- 15 Cricket Net
- 16 Basement Ramp.

1B+1T	(54.81 Sqmt.)
590 sqft	
2B+2T	(78.03 Sqmt.)
840 sqft	
2B+2T	(87.32 Sqmt.)
940 sqft	
2B+2T+ Sr.T	(106.83 Sqmt.)
1150 sqft	
3B+2T	(116.59 Sqmt.)
1255 sqft	
3B+3T+ Sr.T	(137.49 Sqmt.)
1480 sqft	
4B+4T+ Sr.T	(178.37 Sqmt.)
1920 sqft	





**TYPE 1**  
1BHK + 1T + Living + Dinning  
+ Kitchen + Utility + Balcony  
**SUPER AREA = 590 sq. ft.**



**TYPE 2**  
2BHK + 2T + Living + Dinning  
+ Kitchen + Utility + Balconies  
**SUPER AREA = 840 sq. ft.**





**TYPE 3**  
2BHK + 2T + Living + Dinning  
+ Kitchen + Utility + Balconies  
**SUPER AREA = 940 sq. ft.**



**TYPE 4**  
2BHK + 3T + STY/SRV + Living + Dinning  
+ Kitchen + Utility + Balconies  
**SUPER AREA = 1150 sq. ft.**





**TYPE 5**  
3BHK + 2T + Living + Dinning  
+ Kitchen + Utility + Balconies  
**SUPER AREA = 1255 sq. ft.**



**TYPE 6**  
3BHK + 4T + STY/SRV + Living + Dinning  
+ Kitchen + Utility + Balconies  
**SUPER AREA = 1480 sq. ft.**





**TYPE 7**  
4BHK + 5T + STY/SRV + Living + Dinning  
+ Kitchen + Utility + Balconies  
**SUPER AREA = 1920 sq. ft.**

## SPECIFICATIONS

### GENERAL

- Earthquake resistant structure zone IV complaint designed by highly experienced structural engineers

### SUPER STRUCTURE

- Sheer wall structure with columns R.C.C slabs & beams with brick wall partitions in between.

### FLOORING

- Vitrified tiles in Drawing/Dining/Bedrooms laminated wooden flooring in master bedrooms
- Anti - skid ceramic tiles in kitchen, toilet & balcony. Marble stone in corridor, lift, lobby and staircase

### DOOR AND WINDOWS

- External doors & window made of UPVC
- Internal doors in hardwood frames with laminated flush doors
- Entrance door - decorative finish

### KITCHEN

- Granite top working platform
- Stainless steel sink
- Ceramic glazed tiles 2 feet above working platform with chrome finish sanitary wares

### TOILETS

- Provision for hot and cold water glazed tiles in pleasing colours on walls up to door level
- European WC's washbasins & cisterns in light shade of standard brand. Chrome plated fitting of standard make

### INSIDE WALL FINISH

- Inside wall with POP and one concept wall in bed room, acrylic emulsion paint

### ELECTRICALS

- Modular and elegant light and power points, cable TV and telephone points in drawing room and master bed room. Copper wires in concealed PVC conduits with MCB

### EXTERNAL FINISH / LIFT

- Modern and elegant outer finish with high quality paint/stone with plaster & decorative
- Lobby/Entrance lobby wood/tiles up to 7 feet and texture paint

### EXTERNAL FAÇADE

- Exterior with superior paint finish

### INTERCOM FACILITY

- Provision of intercom facility in each flat

### WATER SUPPLY

- Underground and overhead water tanks with pumps for uninterrupted water supply

### PNG GAS PIPELINE

- Provision of gas pipeline infrastructure

### HIGH TECH SECURITY

Provision For:

- Hi-tech security system, safety alarm, safety camera
- Ultra High Speed Broadband
- Multiple IPTV connected
- Choice of upgrading your intercom into video intercom
- Choice of multiple satellite channels from across the world
- Integration of common area Wi-Fi & CCTV system



## CLUB HOUSE



There will be times when you'll feel like unwinding yourself. There will be times, when you will feel euphoric. For those moments, we have a state-of-the-art club. Refresh yourself at the cafe, revitalize your body at the hi-tech gymnasium and sports zones or relax by the infinity pool right inside it.

## AMENITIES



Billiards / Snooker



World Class  
Gymnasium



Jacuzzi & Aroma Massage  
Therapy Spa



Walking & Jogging Track



Kids Play Area



Swimming Pool with Separated  
Splash Pool for kids



Tennis Court



Badminton Court



Half Basketball Court



Yoga/Meditation Centre

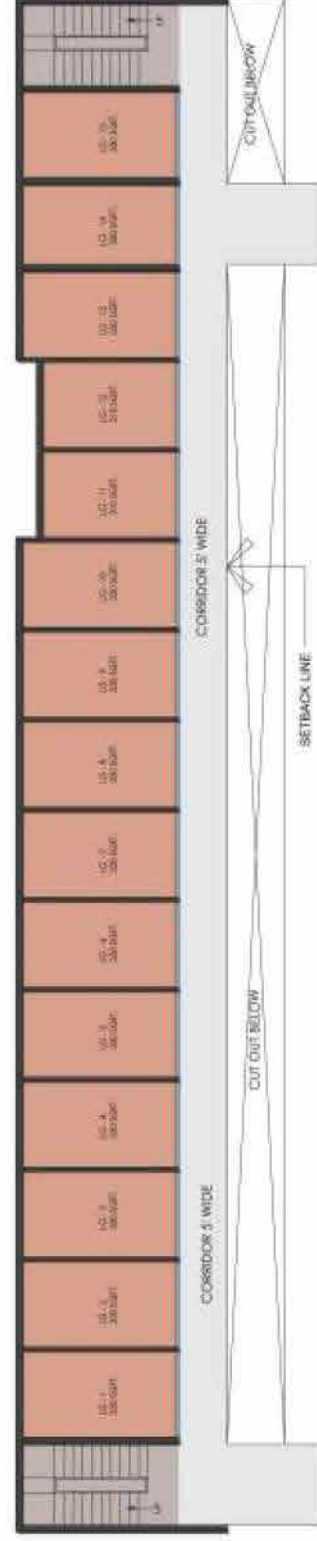




**SIKKA**  
**KOSMIC**  
**GLOBE**

Your World of Modern  
**CONVENIENCES**

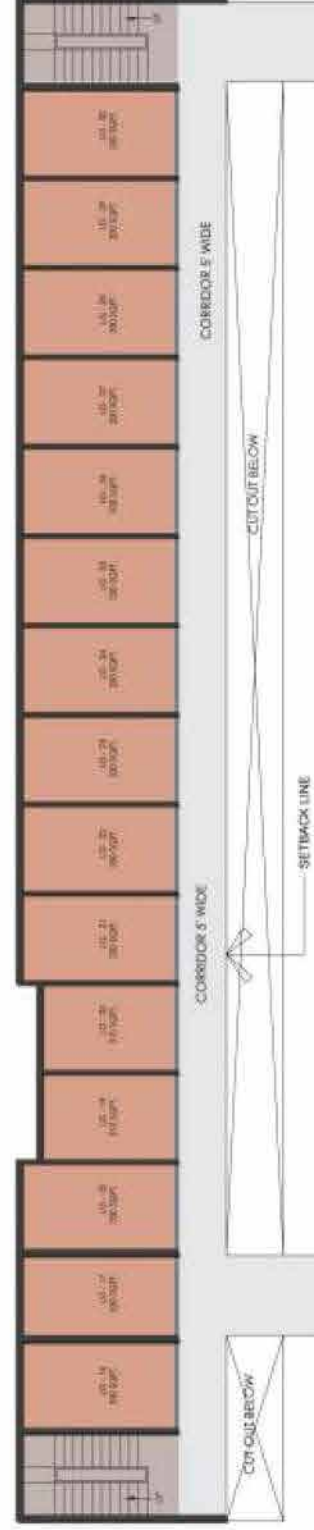




**KOSMIC GLOBE BLOCK - A ( Lower Ground )**



**KOSMIC GLOBE BLOCK - A ( Upper Ground )**



**KOSMIC GLOBE BLOCK - B ( Lower Ground )**



**KOSMIC GLOBE BLOCK - B ( Upper Ground )**



## ALREADY DELIVERED PROJECTS



**Sikka Karmic Greens,**  
Sec. 78, Noida



**Sikka Classic Homes,**  
Kaushambi, Ghaziabad



**Sikka Plaza,**  
Mayur Vihar Phase-I, Delhi



**Sikka Complex,**  
Preet Vihar, Delhi



**Sikka Trade Complex**  
New Rajdhani Enclave, Delhi



**Sikka Galaxy**  
Shreshtha Vihar, Delhi

## ONGOING PROJECTS (TO BE DELIVERED SOON)



**Sikka Karnam Greens**  
Sec-143 B, FNG Expressway, Noida



**Sikka Kaamna Greens**  
Sec-143, FNG & Expressway, Noida



**Sikka Kaamya Greens**  
Sec-10, Greater Noida, West



**Kapital Grand**  
Sec-98, Noida Expressway



**Sikka Kimaya Greens**  
Sahastradhara Road, Dehradun



**Sikka Krissh Greens**  
NH-58, Meerut