

**SIGNUM 93**  
THE RETAIL HUB

**ADDRESSING TO YOUR NEEDS  
AT THE CLASSIEST ADDRESS**

RETAIL HUB AT SECTOR-93, GURUGRAM

LOAN AVAILABLE FROM:



Marketed by:



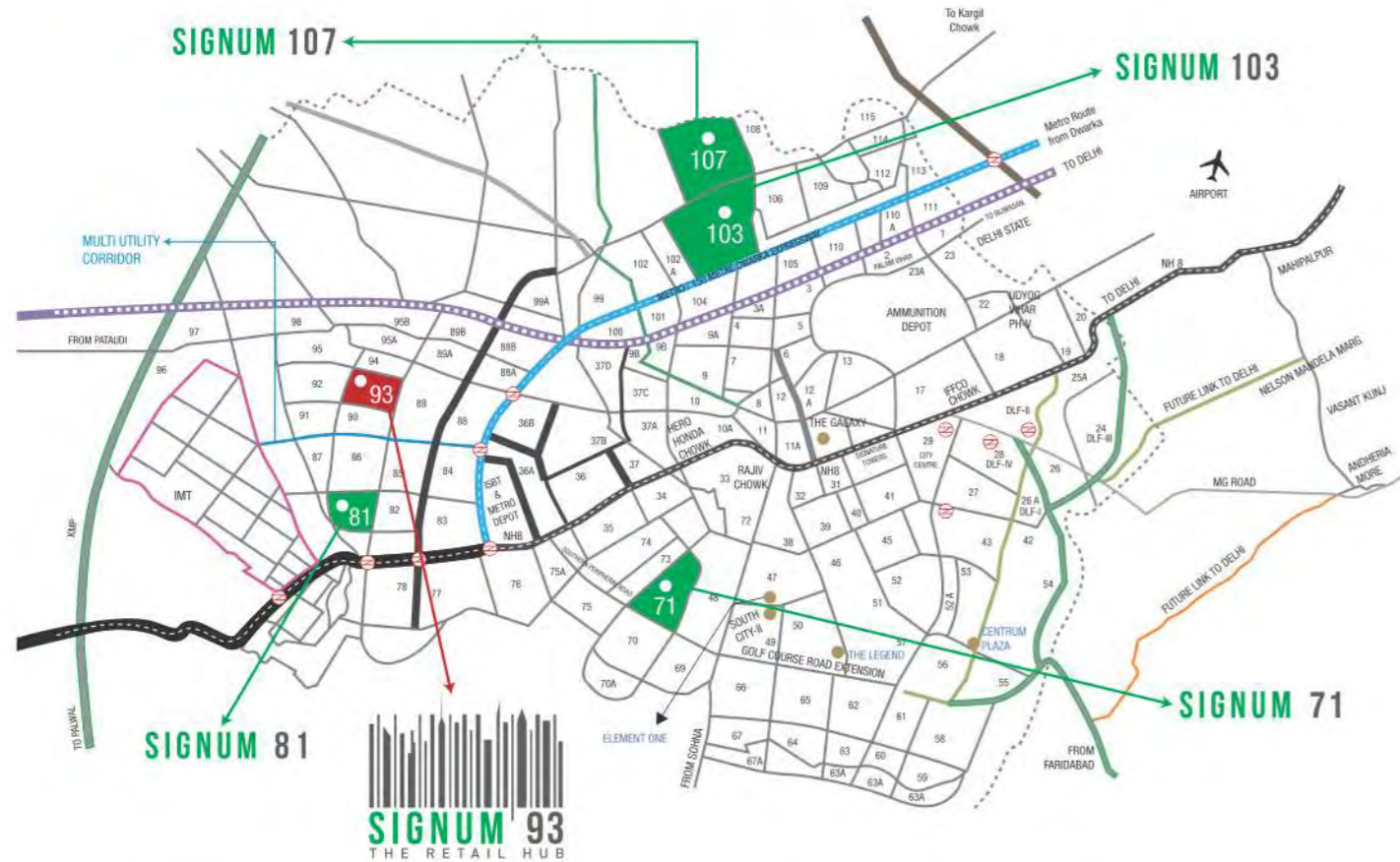
**Madhyam.com**

Follow us on: [f](#) [t](#) /teammadhyam E-mail: info@madhyam.com  
Cyprus (Europe) | Noida | Gurugram | Faridabad | Bhiwadi | Mathura | Chandigarh








# GROW FROM A POSITION OF POWER

Located at Sector 93 - The Bedrock of Gurugram's Tomorrow



Signum 93 is a rare combination of affordability and accessibility. With the most important landmarks and city centers right next door, this residential complex is a dream come true for both the end user as well as the investor.

-  5 Minutes from proposed Metro Station
-  5 Minutes from NH-8
-  10 Minutes from New Delhi
-  15 Minutes from IGI Airport
-  5 Star Hotels, Premium Residential Colonies & Commercial Projects in close proximity

# A PROSPEROUS FUTURE COMES FROM A STRONG FOUNDATION



Signature Global (India) Private Limited was formulated in the year 2000. It is one of the key stakeholders of SMC Group. SMC Group is one of the leading financial investment groups in India with a pan India presence. Signature Global (India) Private Limited enjoys a record of 16 glorious years of successful operations in the industry. The Group Signature Global (India) Pvt. Ltd. has forayed into real estate through its subsidiary Signature Builders Pvt. Ltd. Under the brand name Signature Global, Signature Builders Pvt. Ltd. plans to come up with several real estate projects across the country in the coming years. Signature Builders Pvt. Ltd. emphasizes on the core values of reliability and responsibility of global standards. Led by a strong management and highly-qualified Board-of-Directors team, the company is poised for rapid growth. The team's unique experience and in-depth industry insight allows the company to discover new opportunities and reveal their true potential.

## DAILY NEED SHOPS (DNS):

### SHOP CATEGORIES:

The following are the type of shops every society needs:

1. General Store - At least 5 shops required
2. Saloon
3. Beauty parlor
4. Gents parlor
5. Chemist
6. Photo studio
7. Mobile Recharge / accessories
8. Pets shop
9. ATM
10. Gyr
11. Bakery shop
12. Hardware shop
13. Tailor
14. Boutique
15. Lingerie shop
16. Pure stationery
17. Uniform - Gents n kids
18. Shoe parlor - daily use slipper
19. Take away
20. Dentist
21. Palanjali
22. Pathology
23. Optical shop
24. Vegetable shop
25. Dry cleaner
26. Banks / atm
27. Halwai / sweet shop
28. Electrical
29. Property Dealer



### SIGNUM 93 ADVANTAGE

- Only Daily Need Plaza (Retail shops) - 92 sqft - 752 sqft
- Catering to over 5000 families
- Our projects like New town heights 90, 91, 92, Privy the address 93, Floora 90, Sanskruti 92, Navodaya 92, Ansal heights 92, Orchard Avenue 93 going to witness only **SIGNUM 93**

## FLOOR PLAN

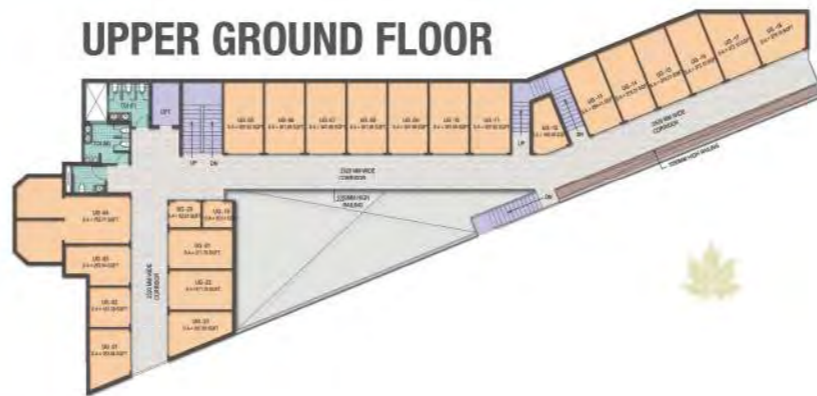
### LOWER FLOOR



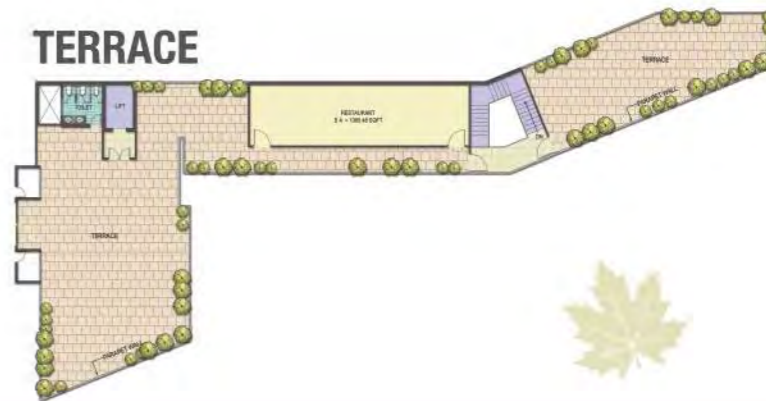
### FIRST FLOOR



### UPPER GROUND FLOOR



### TERRACE



## A RARE OPPORTUNITY TO RULE THE RETAIL MARKET.

Join us in bringing a new and improved retail experience to Sector 93, Gurugram. Signum 93, a High Street Retail Market offers open air shop spaces that are low maintenance. It is the only retail hub for thousands of affluent families at Orchard Avenue and near by Sectors. Your choice of investment will soon be the first choice of a complete shopping destination for many.



**ORCHARD  
AVENUE**  
THE OASIS OF LIFE IN TOWN



**SIGNUM 93**  
THE RETAIL HUB

- STATE OF THE ART, CONTEMPORARY CONSTRUCTION AND ARCHITECTURE
- HIGH QUALITY FINISHES AND FITTINGS
- EXCELLENT WORKMANSHIP THAT LASTS FOR YEARS
- ZERO MAINTENANCE FOR 5 YEARS
- PROVISION FOR WATER & POWER BACK UP
- HIGH STREET RETAIL MARKET
- ENTRY TO RETAIL FROM 24 METER WIDE ROAD