



supertech
**DOON
SQUARE**
SIDCULIT Park, Dehradun.

THE PREMIUM COMMERCIAL ADDRESS AMIDST SCENIC BEAUTY

Mall | Multiplex | Retail | Office Space | Serviced Apartments | Hotel



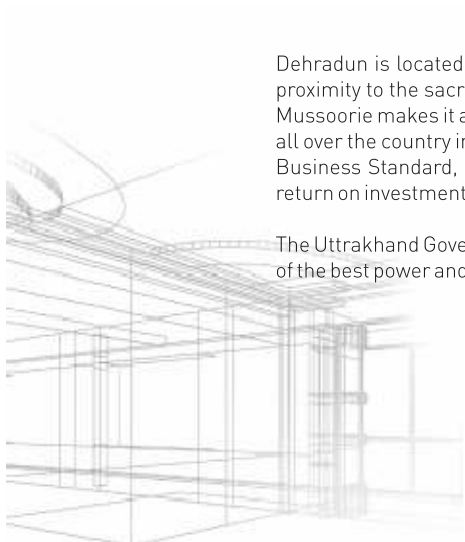


Dehradun

the heart of the fastest Growing Economy

Dehradun is located just 230 kilometers from the national capital and is well connected by road, rail and air to major Indian cities. Its proximity to the sacred Ganga river, the religious towns of Rishikesh, Haridwar, Badrinath and Kedarnath and the popular hill station of Mussoorie makes it an important destination for tourists and adventure sports lovers. Being the hub of a booming real estate, people from all over the country including NRIs (Non Resident Indians) have been aggressively investing in the city. According to a survey conducted by Business Standard, Dehradun ranks 5th on NRIs' list of property investment destination. Properties in Dehradun promise you a high return on investment, both financially and by quality of life.

The Uttarakhand Government has also taken active steps in improving the infrastructure of the city. Today Dehradun can boast of having one of the best power and water supply distribution schemes in the entire country.

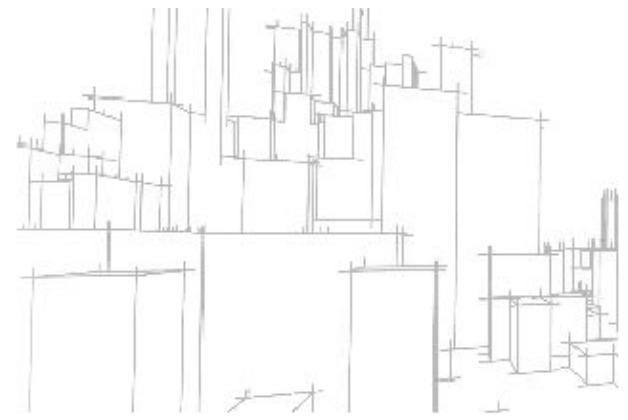


Doon Square

the hottest destination in Dehradun's economic future

Supertech presents Doon Square; the commercial project that's already the talk of Dehradun. Situated at the epicenter of SIDCUL IT Park, Doon Square is poised to be the hottest commercial destination in Dehradun's economic future. Spread over 4.2 acres, this 5-storey project accommodates Mall, Multiplex, Retail, Office Space, Serviced Apartments and Hotel.

Doon Square is located in the heart of SIDCUL Information Park across over 60 acres at Sahastradhara road, Dehradun is the state capital with intelligent buildings and hi-tech habitat centre. The State Government has undertaken major initiatives in IT Education, formulation of a pro-active IT Policy and development of International Quality Infrastructure.





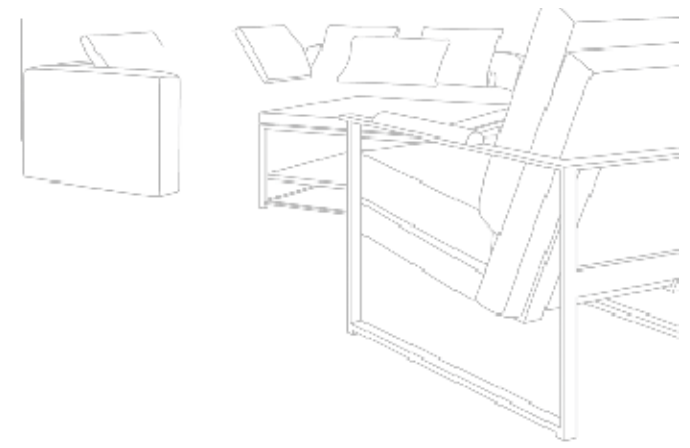
Retail

at a leisurely pace

With well-developed residential sectors in the vicinity, and the thriving commercial and IT hub, you are assured of a high-purchase-power-captive clientele at Doon Square.

The well-planned retail area is designed to let a person shop at their own pace. Set up a restaurant, an apparel store, a boutique or a gift store. No matter what your retail venture is, you will find an audience willing to indulge here.

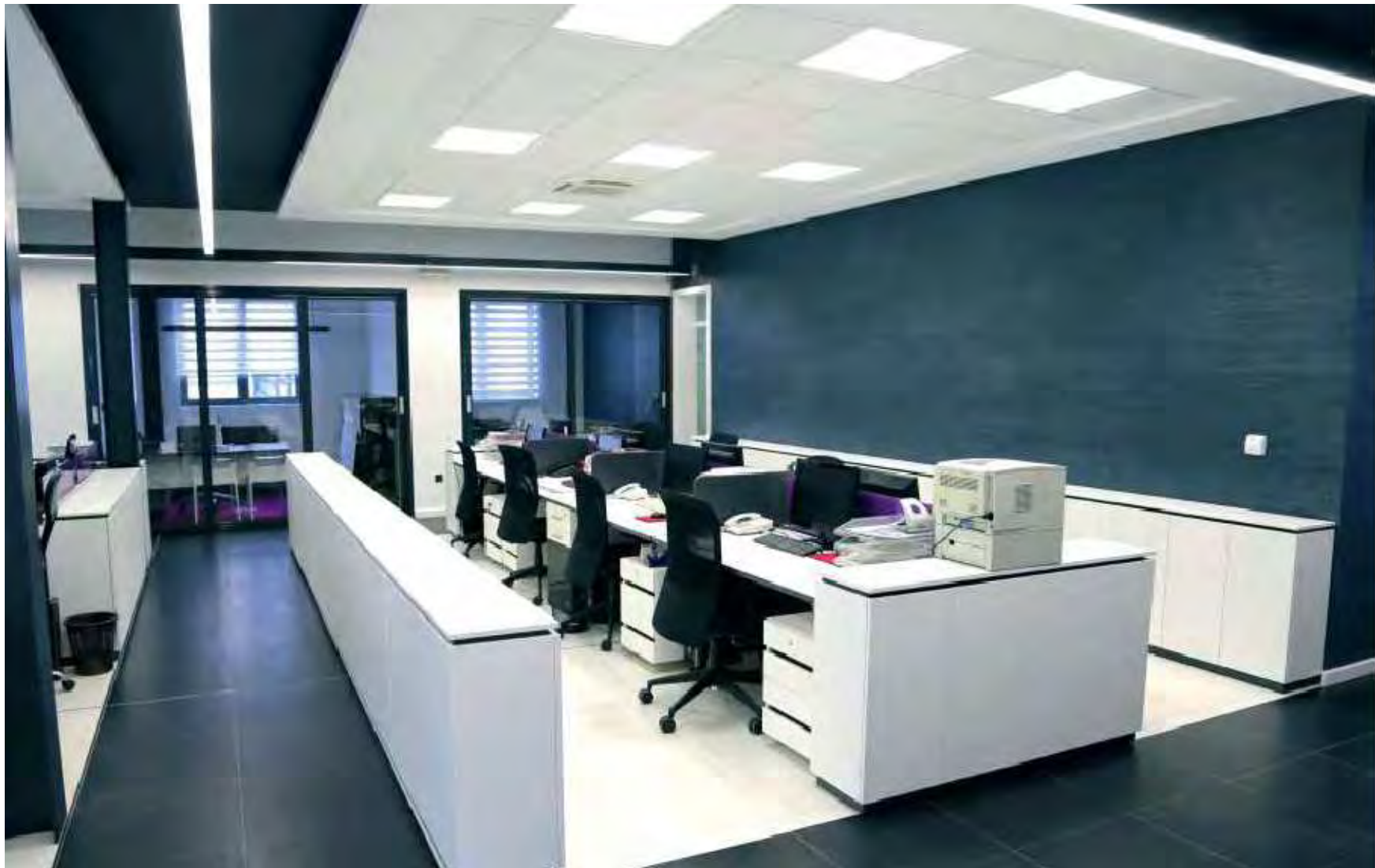




Office Spaces

where comfort & business go hand-in-hand

The futuristic, meticulously planned work spaces are the hallmark of Doon Square. It is designed to free your mind from worries that include parking, security, environment, lack of recreation and unthoughtful surroundings. With its intelligently designed work spaces amidst a picture perfect environment and a host of other features, doing business here will be a pleasure.





World-class comfort and service

fully-furnished serviced apartments

Experience the perfect combination of space, aesthetics and design nestling amidst lush green surroundings. Equipped with ultra modern facilities, Serviced Apartments ensure that you enjoy the best of both worlds. Come, create your personal world in the lap of nature.



Serviced Apartments

Typical Unit Plan
Type: A
Area: 555 sq. ft.



▲
Entry

Amenities



King size bed with
mattress and pillows

Bed side tables

2 single seater sofa



Coffee table

Study desk with chair

Curtains with rods



Air-conditioner

22" LCD TV

Wardrobe



Designer light fittings

Ceiling fan

Modular kitchenette

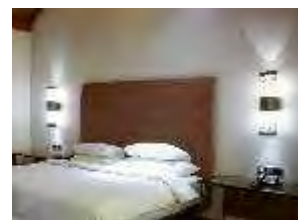
Under counter Refrigerator



Chimney

Cooktop

Geyser in toilet



Towel rack/Ring accessories in toilet

Vanity in toilet

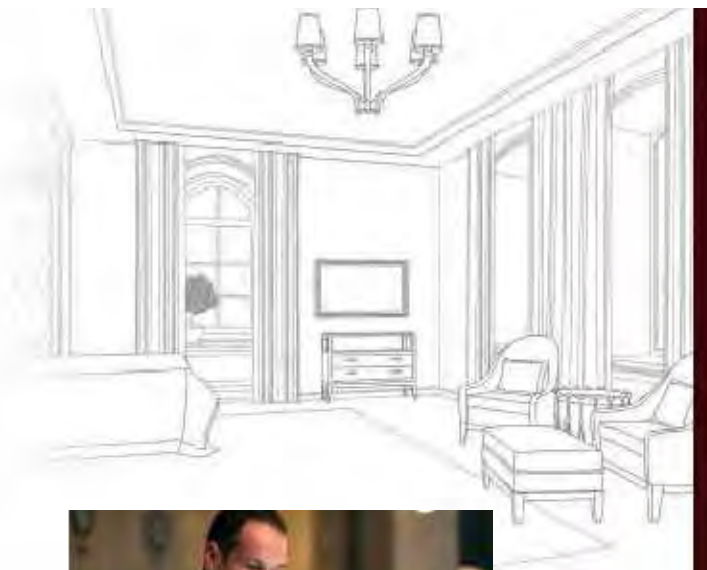
Exhaust fan



Hyphen Hotel

a talisman of new-age comfort and luxury

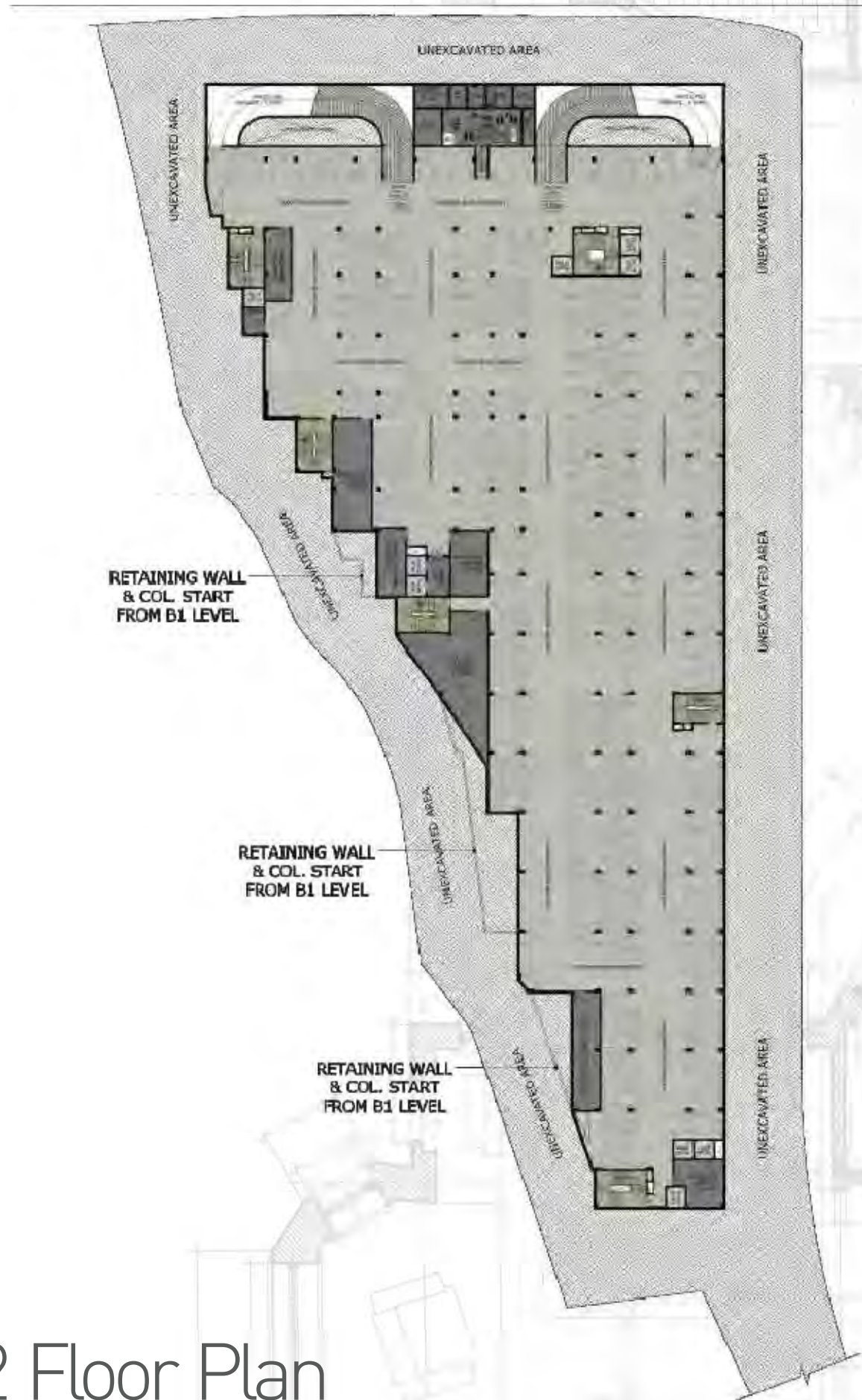
Located in Doon Square complex, Hyphen Hotel captures modern elegance in its most comfortable avatar. Intelligently designed with impeccable service standards, this hotel gives business and leisure travellers a unique mix of luxury and simplicity. Facilities include outdoor party lawns, conference room, business centre facilities, gymnasium, along with 24x7 Wi-Fi connectivity in every room, mini bar and more. Come, experience the new heights of luxury.





- SHOPS
- HYPER MARKET AREA
- SERVICE APT. LOBBY/CORRIDOR
- BANQUET AREA
- BANQUET HALL
- MALL CORRIDOR AREA
- MALL SERVICE AREA
- PARKING/ROAD AREA
- SECURITY

Basement-01 Floor Plan



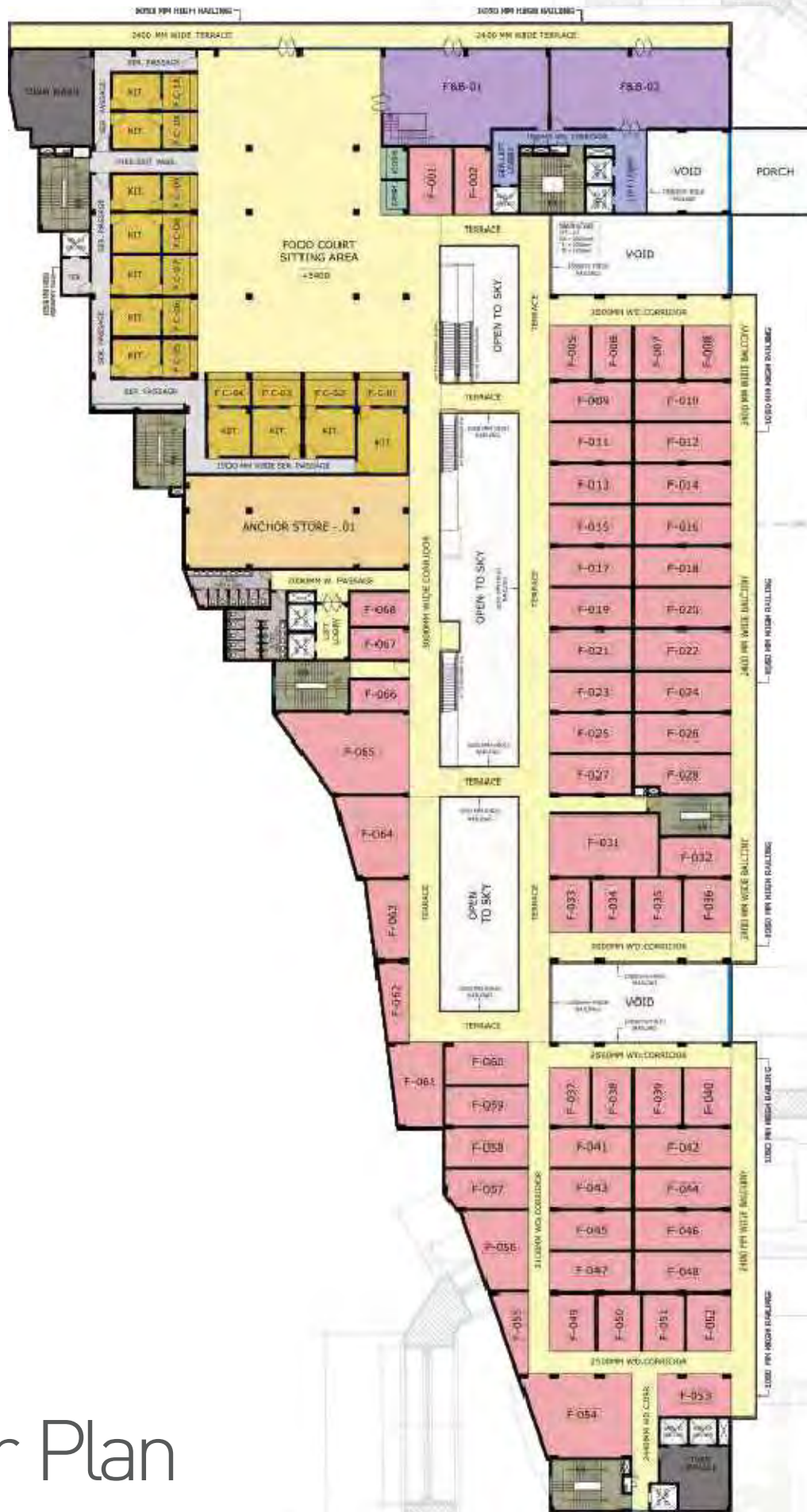
- LIFTS
- INTERNAL ROAD
- SERVICE/STORE AREA

Basement-02 Floor Plan

- SHOPS
- ANCHOR STORE
- SERVICE APT. LOBBY/CORRIDOR
- F&B
- MALL CORRIDOR AREA
- MALL SERVICE AREA
- PARKING/ROAD AREA
- SECURITY

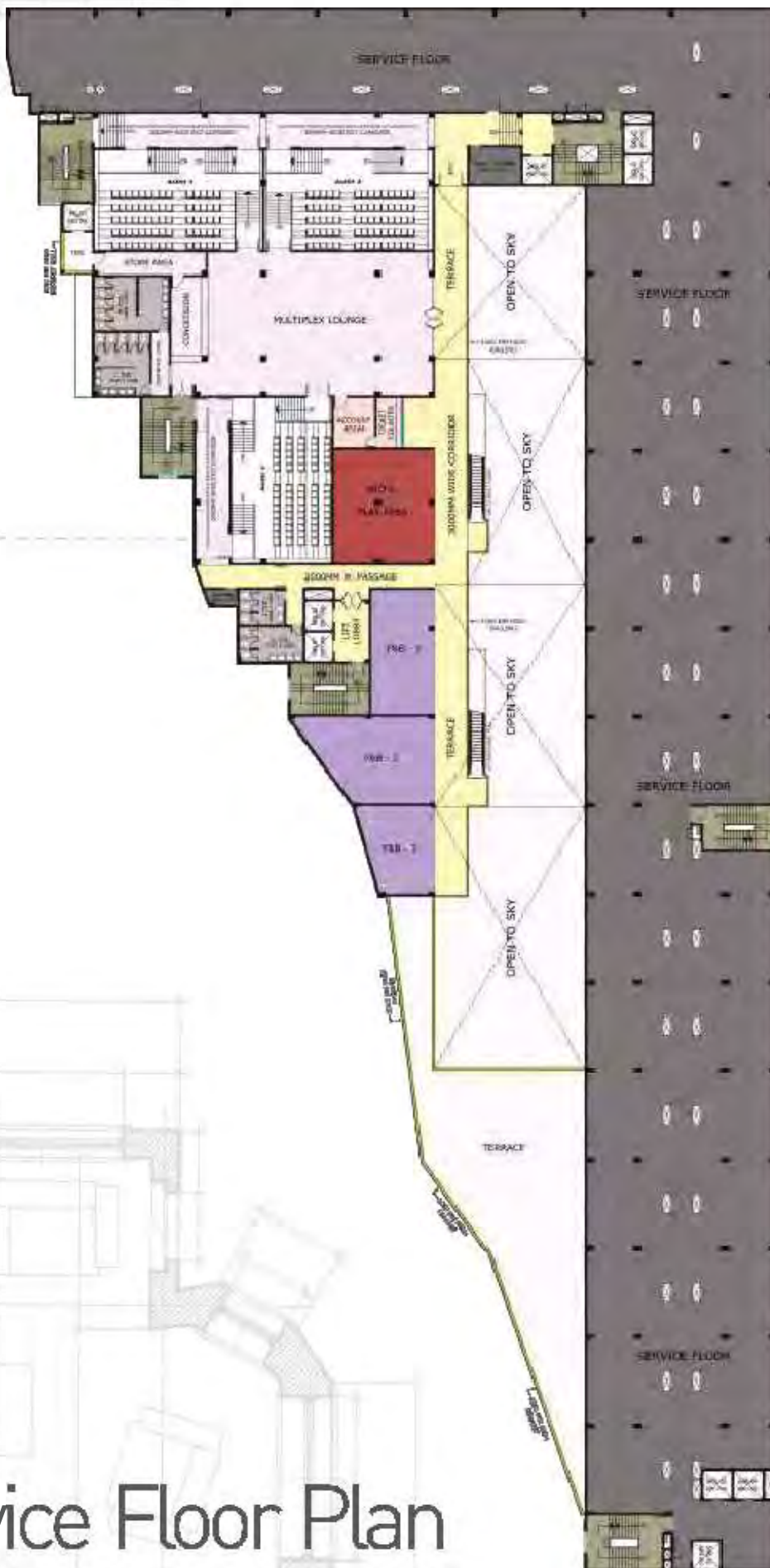
Ground Floor Plan





- SHOPS
- ANCHOR STORE
- SERVICE/STORE AREA
- MALL CORRIDOR AREA
- F&B
- LIFT LOBBY
- F.C. SHOPS
- SERVICE PASSAGE
- DISH WASH
- TOILET
- TERRACE/BALCONY AREA
- CASH COUNTER & KIOSK

First Floor Plan



- MULTIPLEX LOUNGE/AREA
- F&B
- SERVICE AREA/FLOOR
- KIDS PLAY AREA
- TOILET
- CORRIDOR
- ACCOUNTS ROOM/TICKET COUNTER

Second/Service Floor Plan

- SERVICE APT. TYPE A
- SERVICE APT. TYPE B
- SERVICE APT. LOBBY/CORRIDOR
- SERVICE AREA
- MULTIPLEX AREA

Third Floor Plan



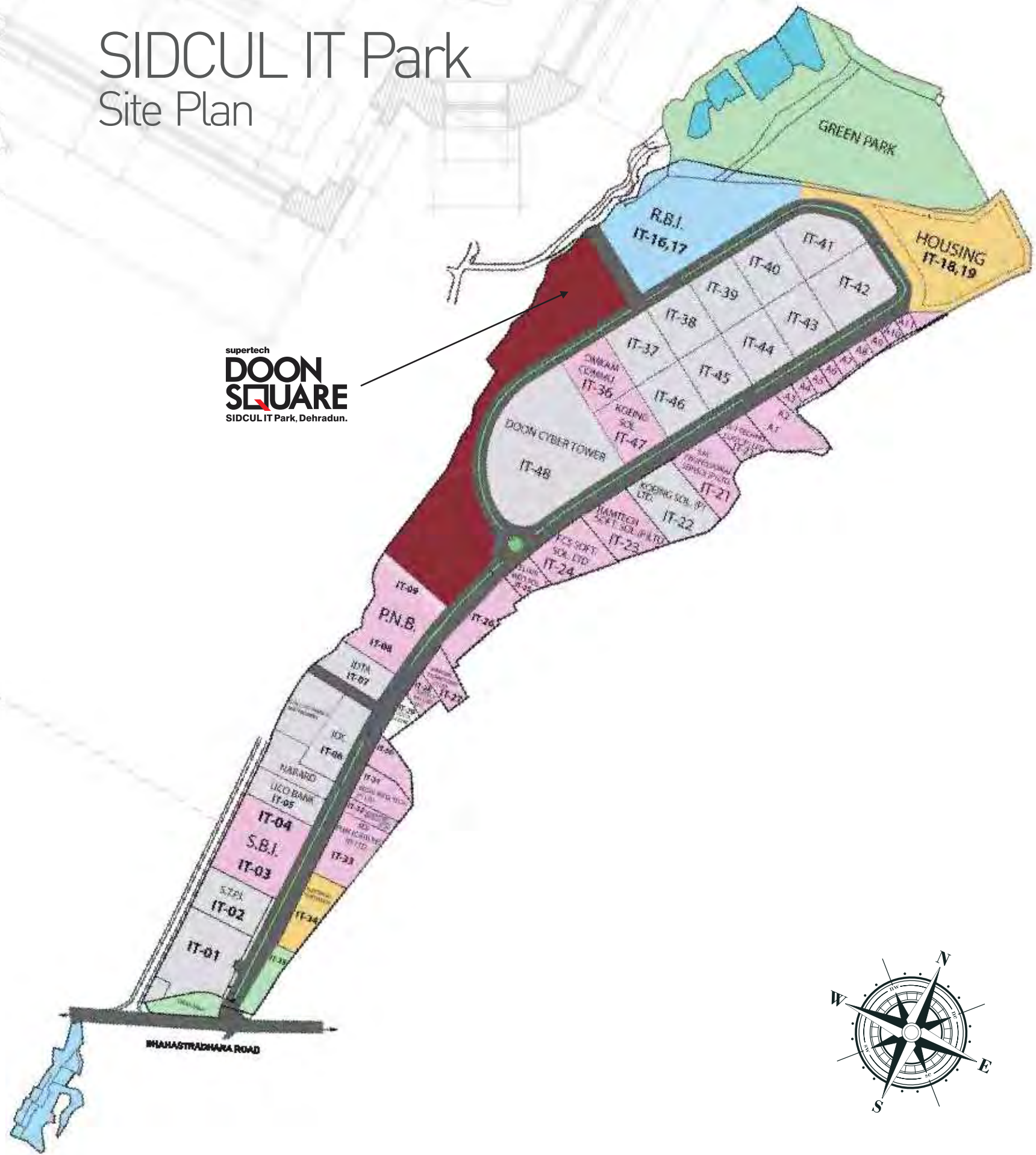


- SERVICE APT. TYPE A
- SERVICE APT. TYPE B
- CORRIDOR AREA
- SERVICE AREA

4th to 6th Floor Plan

SIDCUL IT Park Site Plan

supertech
DOON SQUARE
SIDCUL IT Park, Dehradun.



Doon Square Site Plan



Over 25 years of creating tomorrow's NCR



ONGOING PROJECTS

1. **North Eye**-Sec. 74, Noida
2. **ORB**-Sec. 74, Noida
3. **Supernova**-Sec. 94, Noida
4. **E Square**-Sec. 96, Noida
5. **Apex & Ceyane**-Sec. 93A, Noida Expressway
6. **Upcountry**-Sec. 17A, Yamuna Expressway
7. **Golf Country**-Sec.22D, Yamuna Expressway
8. **Czar**-Sec. Omicron, Greater Noida
9. **Eco Village 1**-Sec. 1, Greater Noida (West)
10. **Eco Village 2**-Sec. 16B, Greater Noida (West)
11. **Eco Village 3 & Oxford Square**-Sec. 16B, Greater Noida (West)
12. **Precast Industry, Industrial**-Sec. 16, Greater Noida
13. **The Romano**-Sector 118, Noida

DELIVERED PROJECTS

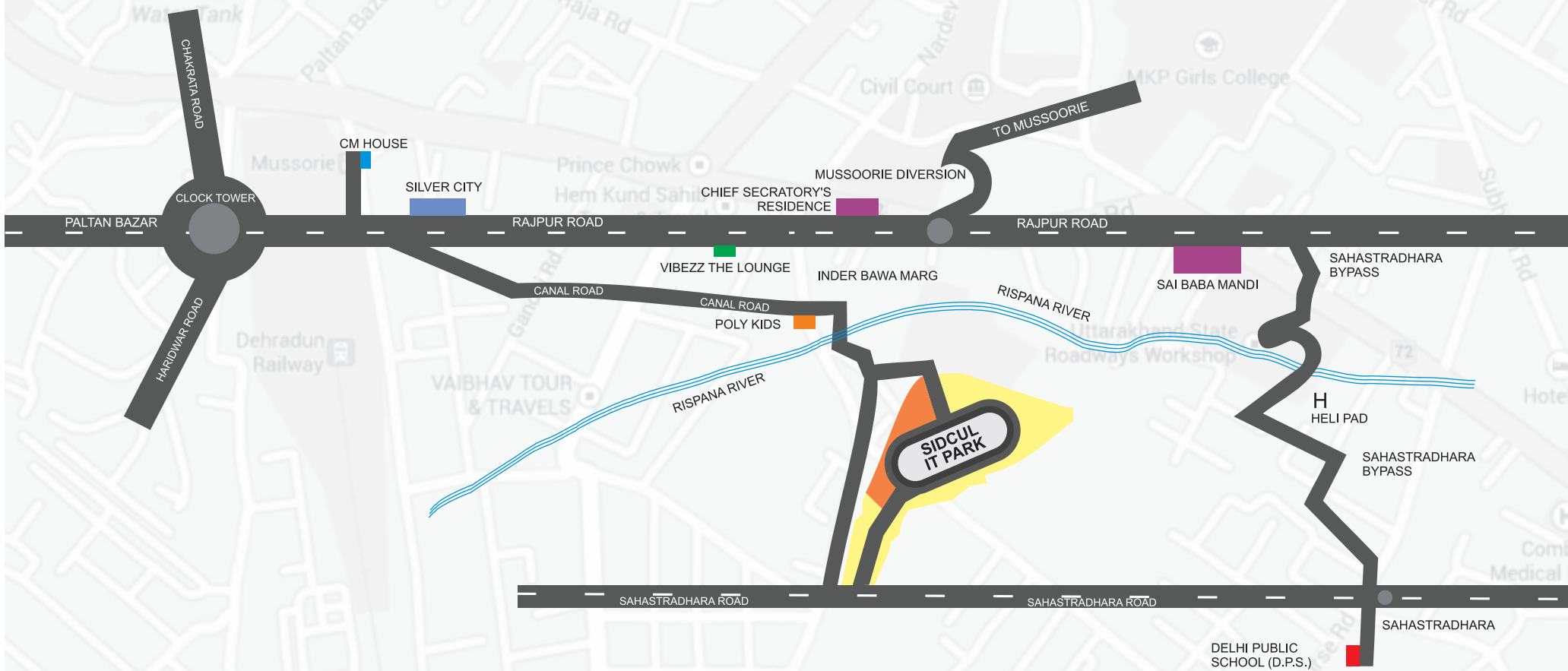
14. **34 Pavilion**-Sec. 34, Noida
15. **Livingston**-Crossings Republik, Ghaziabad
16. **Cape Town**-Sec. 74, Noida
17. **Ecociti**-Sec. 137, Noida Expressway
18. **Supertech Plaza**-Rajendra Nagar, Ghaziabad
19. **Supertech Estate**-Vaishali Ext., Ghaziabad
20. **Supertech Homes**-Sec. 4, Vaishali, Ghaziabad
21. **Shopprix Mall & Avant-Garde**-Sec. 5, Vaishali, Ghaziabad
22. **Supertech Residency**-Sec. 5, Vaishali, Ghaziabad
23. **Rameshwar Orchids**-Kaushambi, Ghaziabad
24. **Supertech ICON**-Indrapuram, Ghaziabad
25. **Hyphen Hotel**-Sec. 62, Noida
26. **Supertech House**-Sec. 58, Noida
27. **Shopprix Mall**-Sec. 61, Noida
28. **Supertech Emerald Court**-Sec. 93A, Noida Expressway

Our key milestones

- More than 20,000 units delivered across 33 million sq. ft
- Projects across more than 50 locations
- More than 60,000 satisfied customers
- Over 25 years of delivering world class projects in Residential, Retail, Hospitality IT Parks, Education and Corporate Spaces
- Projects worth INR 350 billion in progress
- Over 90 million square feet of real estate under development
- Delivery target of 10,000 units across different projects for financial year 2014-15
- 75000 units under construction



Location map



MAP NOT TO SCALE

Key Distance

- Dehradun to Mussoorie- 52 min. drive
- Dehradun to Kichha- 5 h 12 min. drive
- Dehradun to Nainital- 5 h 42 min. drive
- Dehradun to Haldwani- 5 h 21 min. drive

Site Address: Plot No. 13, 14 & 15, IT Park, Sahastradhara Road, Dehradun, Uttarakhand.

Disclaimer: *Conditions apply. All buildings, information, specification, etc. are tentative and subject to variation and modification by the company or the competent authorities sanctioning such plans. Images are for representative purpose only.
*1 sq. mtr. is equal to 10.76 sq. ft. Note: The details of approvals may be seen in our office.

Marketed by:

Madhyam.com

info@madhyam.com | www.madhyam.com | MEL to 56677

Corporate Address:

B-4, 4th Floor, Matrix Tower, Sec-132, Noida (U.P) -201301